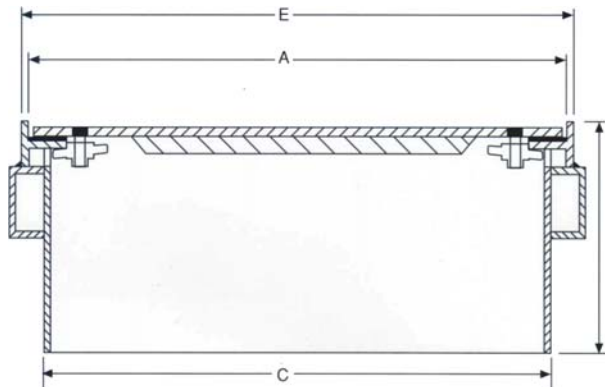
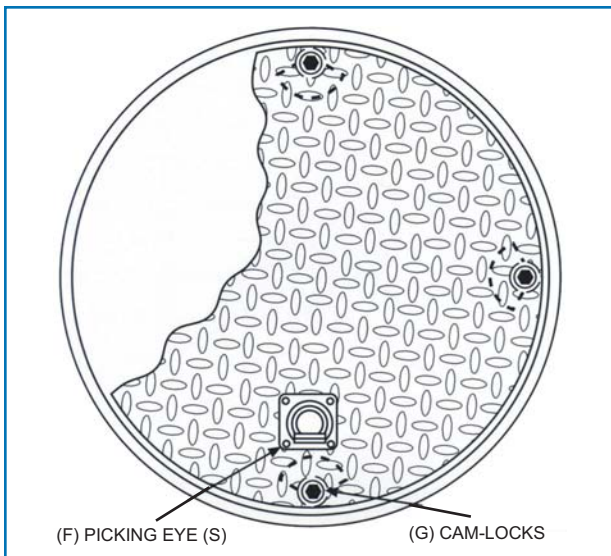


WTL SERIES

WATERTIGHT MANHOLES

CAM-LOCK FEATURES

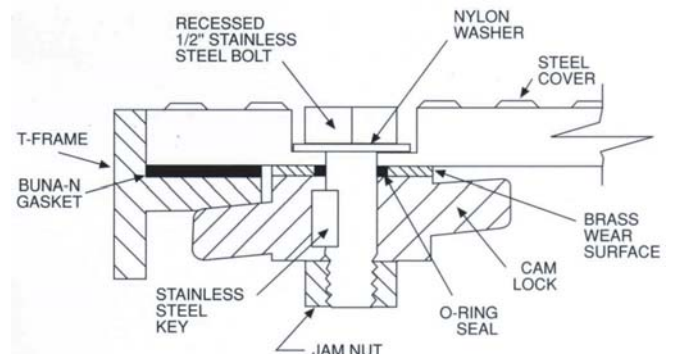
- CAM-LOCK BOLT DOWN DESIGN ALLOWS FOR 1/3rd TURN TO FASTEN COVERS TO FRAMES.
- CAM-LOCKS REMAIN ATTACHED TO MANHOLE COVER, NO MORE LOSING BOLTS.
- CAM-LOCKS ARE O-RING SEALED FOR BETTER WATERPROOFING.
- CAM-LOCKS ARE LOCK INDICATED AND ALLOW COVER REPLACEMENT IN ANY POSITION. NO MORE LOCATING BOLT LOCATIONS.
- CAM-LOCKS ARE OPTIONAL AND CAN BE ADDED TO ANY MANHOLE FOR WATERTIGHT OR RESTRICTED ACCESS. ADD SUFFIX "L" TO MODEL NUMBER.
- LOCK MECHANISMS ARE CONSTRUCTED OF STAINLESS STEEL, CAST IRON AND BRASS WEAR SURFACED TO INSURE LONG TERM RELIABILITY.



STANDARD FEATURES

- REINFORCED DIAMOND PLATE STEEL COVERS WITH H-20 TRUCKLOAD RATING.
- 1/8" BUNA-N GASKET.
- 14 GAUGE SKIRTS.
- RECESSED WATERTIGHT PICKED EYE(S) FOR EASY COVER REMOVAL.
- CONCRETE CHANNEL ANCHORS.
- ALL STEEL COATED WITH RUST PREVENTIVE PAINT.
- OPTIONAL INTERNAL ACCESS PORTS AVAILABLE. SEE OUR DUAL AND TRIPLE ACCESS SERIES MANHOLES.

SECTION AA



SOLID COVER CAM-LOCKED WATERTIGHT MANHOLES

MODEL	A	B	C	D	E	F	G
240 WTL	24"	13"	22 1/4"	3/8"	24 3/4"	1	2
300 WTL	29 3/4"	13"	28 3/4"	3/8"	30 3/4"	1	4
360 WTL	35 3/4"	13"	35"	3/8"	36 1/2"	2	4
380 WTL	38"	13"	37 1/2"	3/8"	38 1/2"	2	4
420 WTL	42"	13"	41 1/2"	1/2"	43"	2	4
480 WTL	48"	13"	46 1/2"	1/2"	49"	2	6

MODEL NO: WTL

DWG NO: WTL

WTL
WATERTIGHT
SOLID COVER
MANHOLES

FAIRFIELD INDUSTRIES, INC.

827 NORTH 6TH STREET NEWARK, NJ 07107

PHONE: 973-483-0100 FAX: 973-483-5333

www.fairfield-industries.com

Copyright © 2008 Fairfield Industries, Inc. All rights reserved

9/23/08 Rev: 1