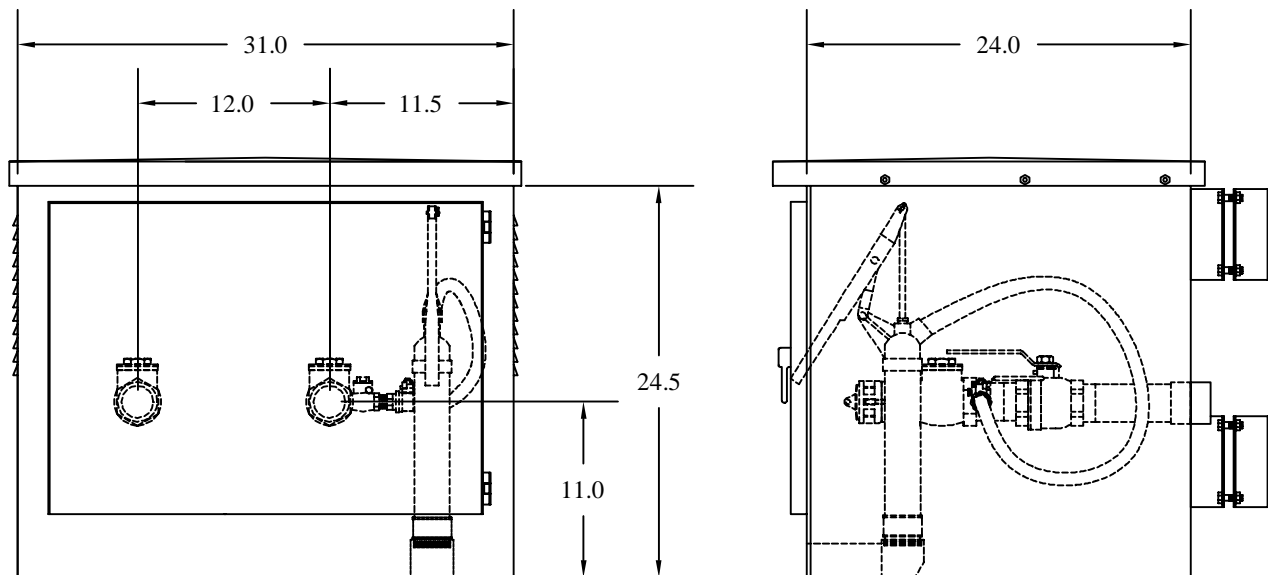


ARFP-DUAL

DUAL-PRODUCT ASSEMBLED REMOTE FILL PORT



FEATURES:

- DIMENSIONS:
26" HIGH
27" DEEP
21" WIDE
- HEAVY GAUGE STAINLESS STEEL ENCLOSURE W/ LOCKABLE HINGED DOOR
- 10 GALLON SPILL CONTAINMENT
- HAND PUMP W/ CHECK VALVE AND SHUTOFF
- AVAILABLE IN EITHER TOP EXIT (SHOWN) OR REAR EXIT.
- INLETS AVAILABLE IN 2", 3" OR 4"
- INLET CONNECTIONS W/ QUICK CONNECTORS AND DUST CAPS
- INTERNAL PRE-PLUMBED CHECK VALVES, FITTINGS AND SHUTOFF VALVES
- GROUND STUD
- POST MOUNT BRACKETS

OPTIONS

- VAPOR RECOVERY BRACKET (VC)
- WALL-MOUNT BRACKETS (WMB)
- PRODUCT LABELS: GASOLINE, DIESEL, KEROSENE, #2 OIL, OIL
- 3" SCH. 40 x 60" MOUNTING POST (3P)
- 3/4" CONDUIT COUPLING (CC)

MODEL: ARFP-DUAL

DATE: 7/14/09

FAIRFIELD INDUSTRIES, INC.

827 NORTH 6TH STREET, NEWARK, NJ 07107

PHONE: 973-483-0100 FAX: 973-483-5333

www.fairfield-industries.com

Copyright© Fairfield Industries, Inc. All rights reserved.

DUAL-PRODUCT ASSEMBLED REMOTE
FILL PORT