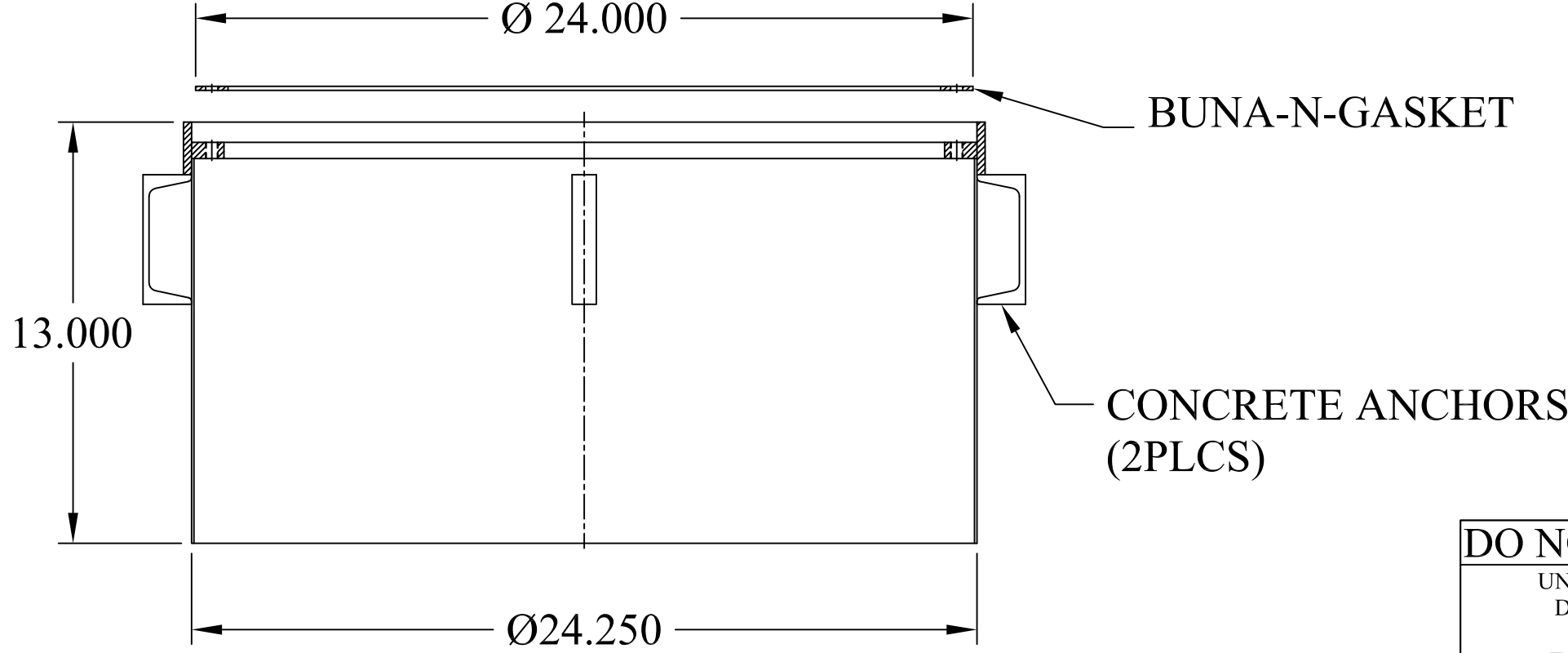
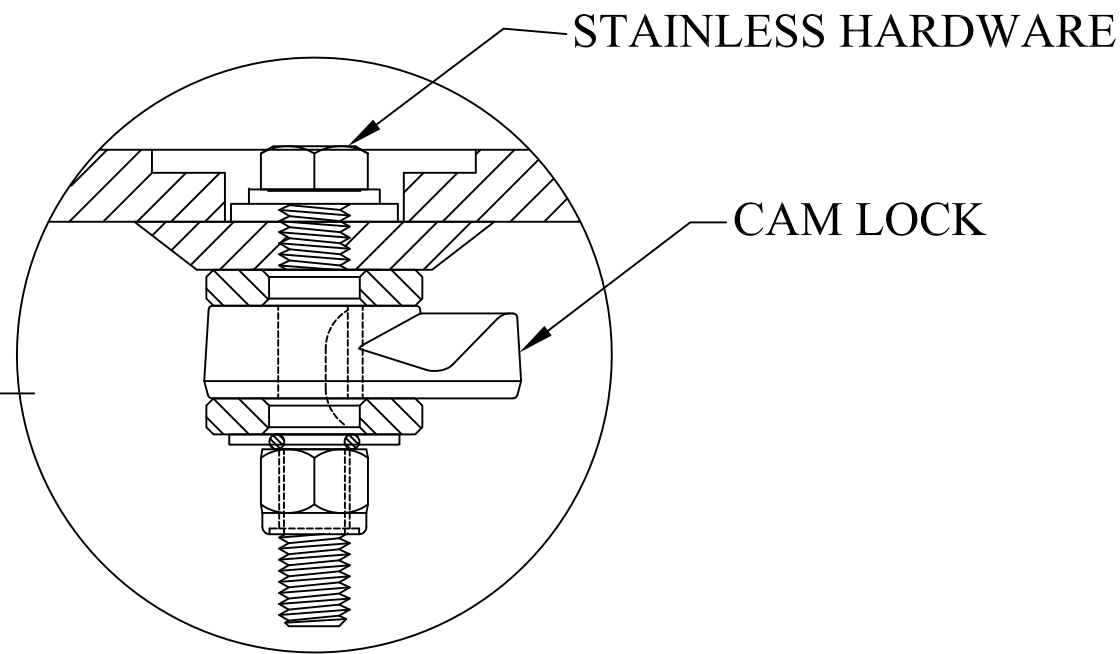
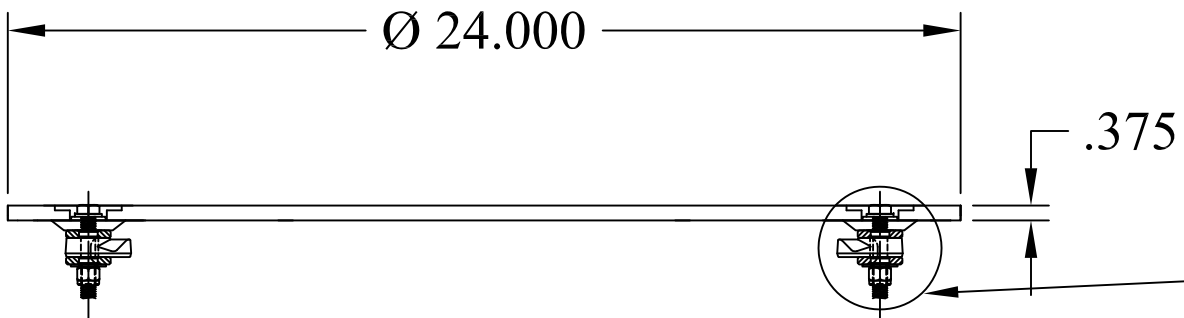
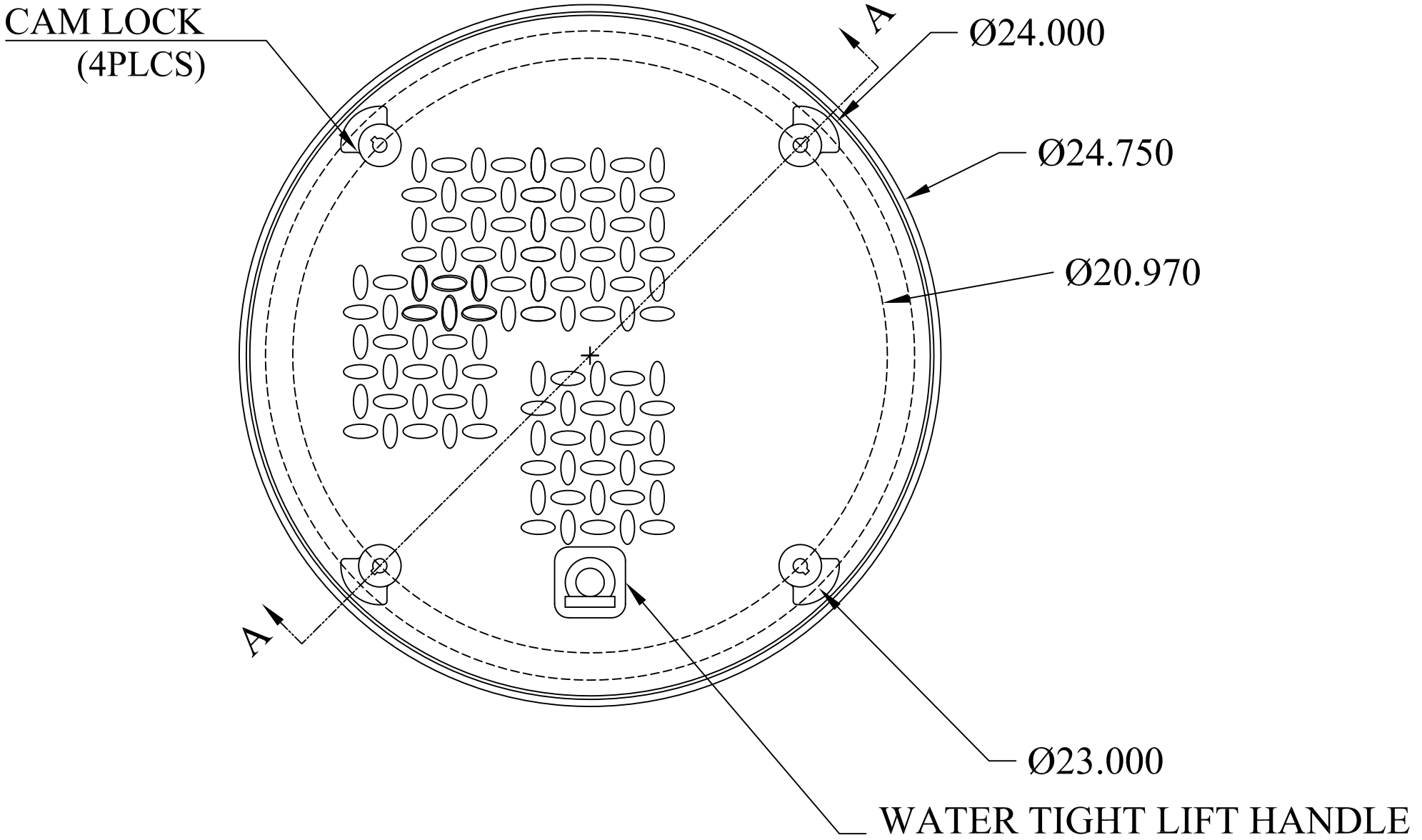


**FEATURES:**

1. STEEL T-FRAME CONSTRUCTION
2. 0.375 THK. DIAMOND PLATE COVER
3. FOUR (4) CAM LOCKS
4. 1/8" BUNA-N GASKET
5. ONE (1) WATER TIGHT LIFT HANDLE
5. 14GA. SKIRT
6. ALL STEEL COATED WITH A RUST PREVENTATIVE PAINT
7. CHANNEL-STYLE CONCRETE ANCHORS



This document is proprietary and confidential. No part of this document may be disclosed in any manner to a third party without the prior written consent of Fairfield Industries

<b>DO NOT SCALE DRAWING</b>		<b>FAIRFIELD INDUSTRIES, INC</b>			
UNLESS OTHERWISE SPECIFIED, DIMENSIONS ARE IN INCHES.		4483 CHOPPEE ROAD, GEORGETOWN SC 29440			
TOLERANCES ON ANGLES: ± 1°		PHONE: 843-461-3894		FAX: 843-461-3907	
FRACTIONAL: ± 1/64		DESCRIPTION			
2-PLACE DECIMALS: ± 0.05		240-WTL			
3-PLACE DECIMALS: ± 0.005		SIZE	SCALE	DWG. NO	C.REV
THIRD ANGLE PROJECTION		C	NTS	D022019-1	-
		DRAWN BY	DATE	SHT	REV
		D NETTLES	02/20/19	1 OF 1	1