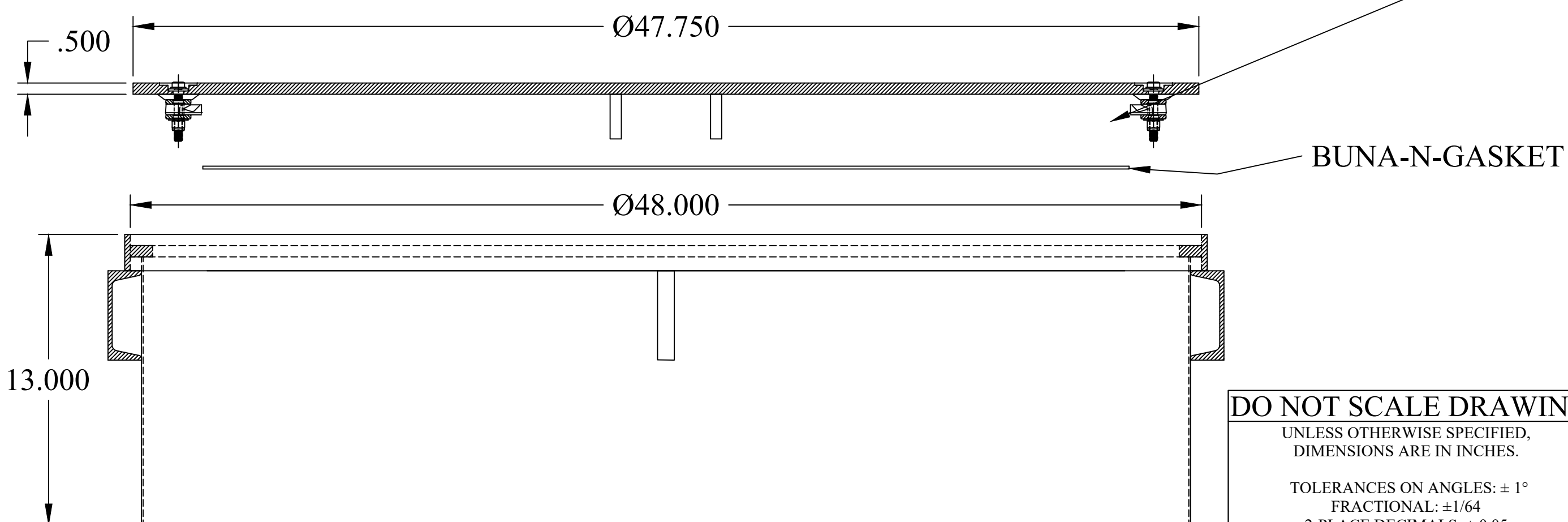
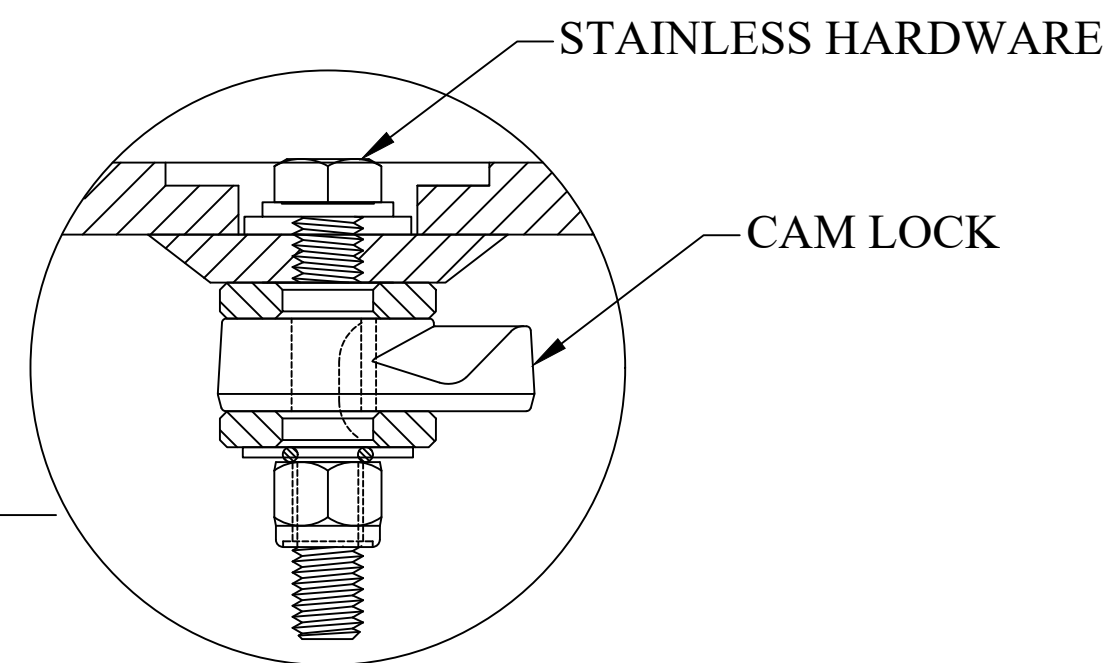


FEATURES:

- STEEL T-FRAME CONSTRUCTION
- REINFORCED DIAMOND PLATE STEEL COVERS WITH H-20 TRUCK LOAD RATING
- SIX (6) CAM LOCKS
- 1/8" BUNA-N GASKET AND STAINLESS STEEL RECESSED HARDWARE
- 14GA. SKIRT
- TWO (2) WATER TIGHT LIFT HANDLES
- ALL STEEL COATED WITH A RUST PREVENTATIVE PAINT
- CHANNEL-STYLE CONCRETE ANCHORS



This document is proprietary and confidential. No part of this document may be disclosed in any manner to a third party without the prior written consent of Fairfield Industries

DO NOT SCALE DRAWING
 UNLESS OTHERWISE SPECIFIED, DIMENSIONS ARE IN INCHES.
 TOLERANCES ON ANGLES: ± 1°
 FRACTIONAL: ± 1/64
 2-PLACE DECIMALS: ± 0.05
 3-PLACE DECIMALS: ± 0.005

FAIRFIELD INDUSTRIES, INC

4483 CHOPPEE ROAD, GEORGETOWN SC 29440
 PHONE: 843-461-3894 FAX: 843-461-3907

THIRD ANGLE PROJECTION

DESCRIPTION		480-WTL	
SIZE	SCALE	DWG. NO	C.REV
C	NTS	D070621-1	-
DRAWN BY		DATE	SHT
D NETTLES		07/06/21	1 OF 1