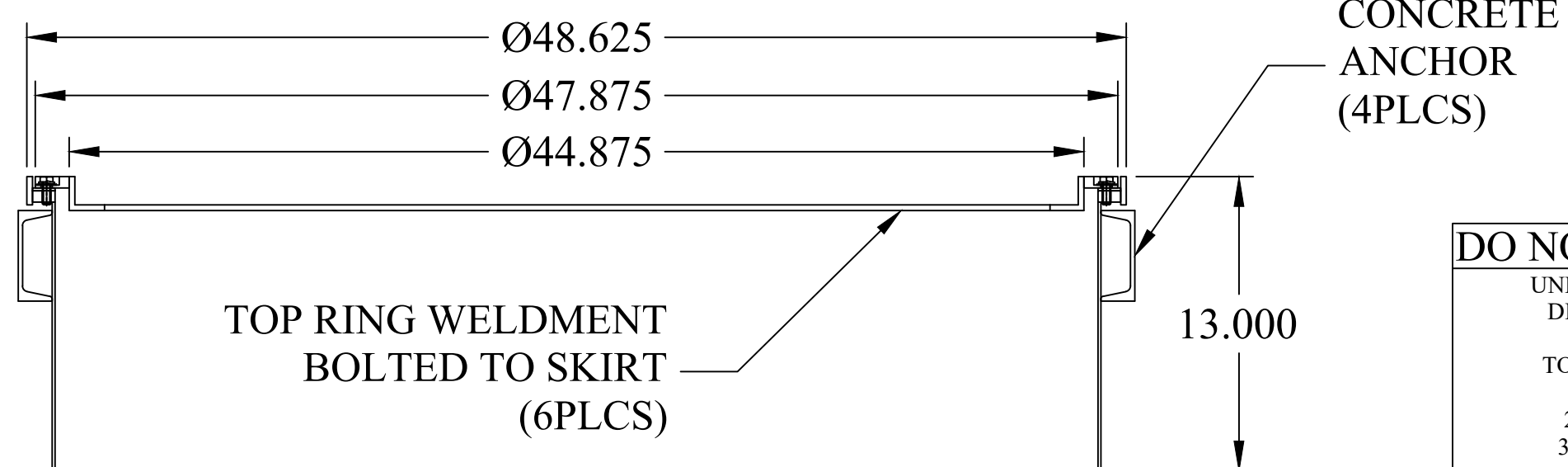
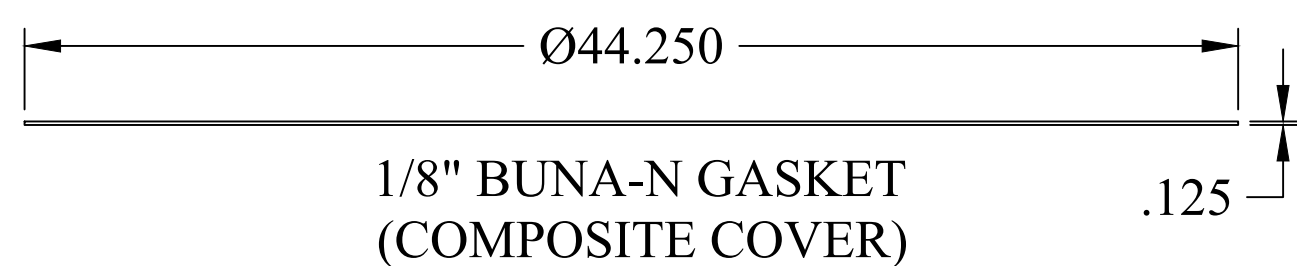
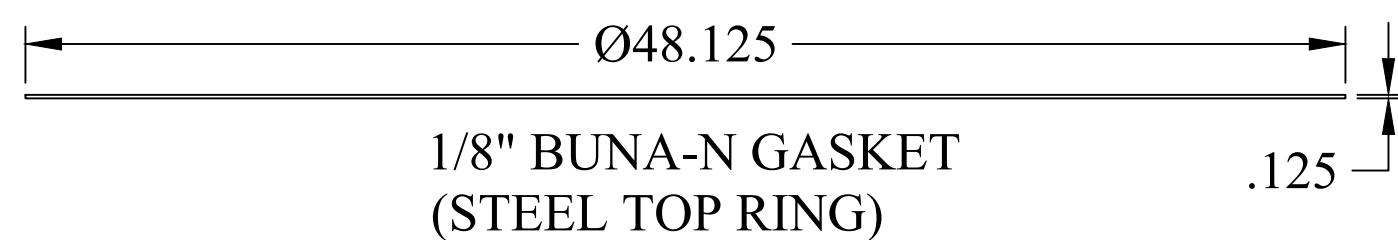
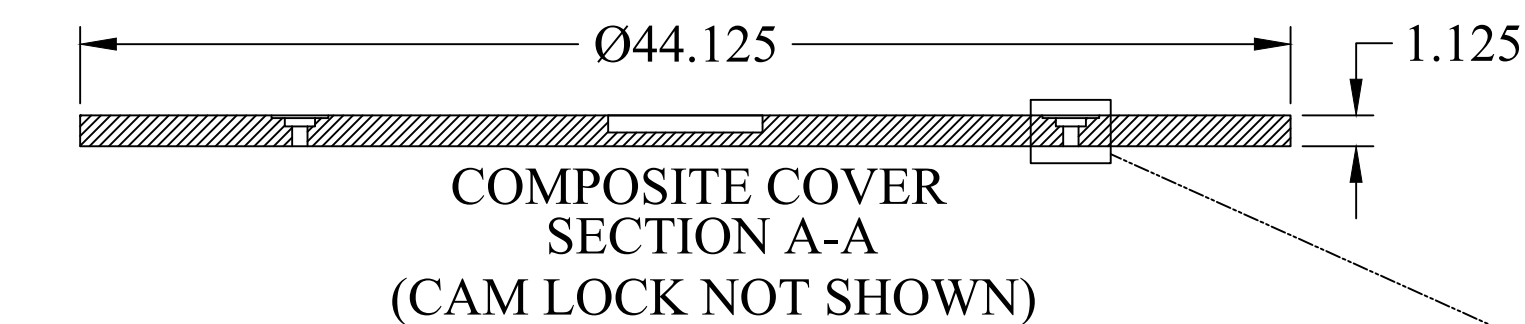
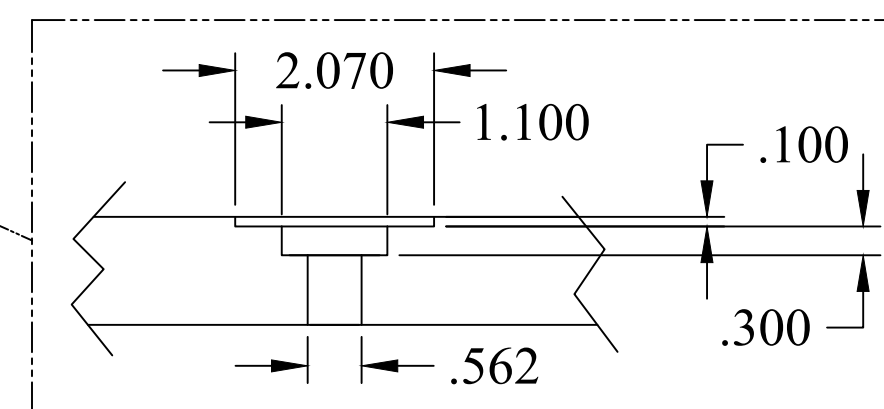
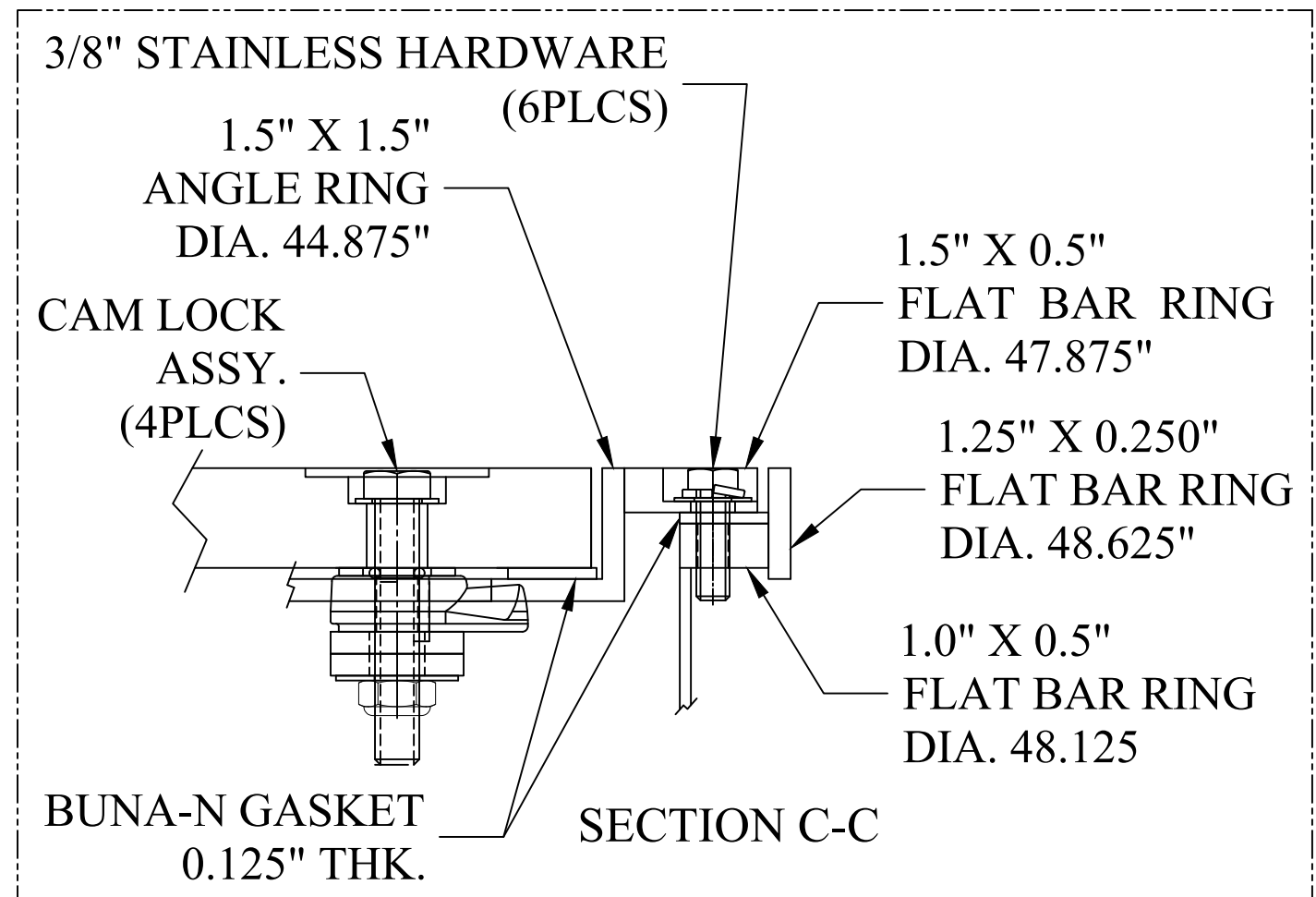
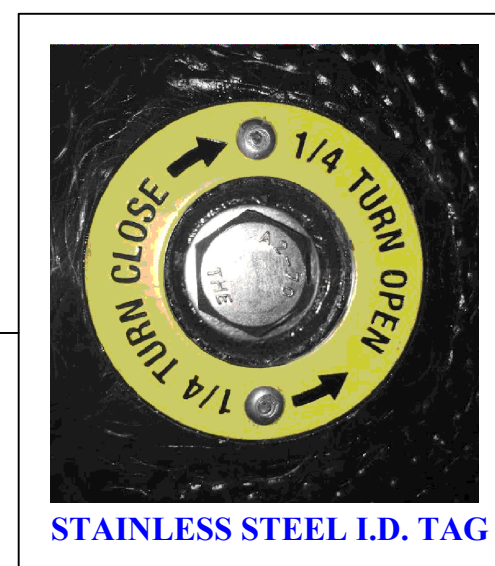
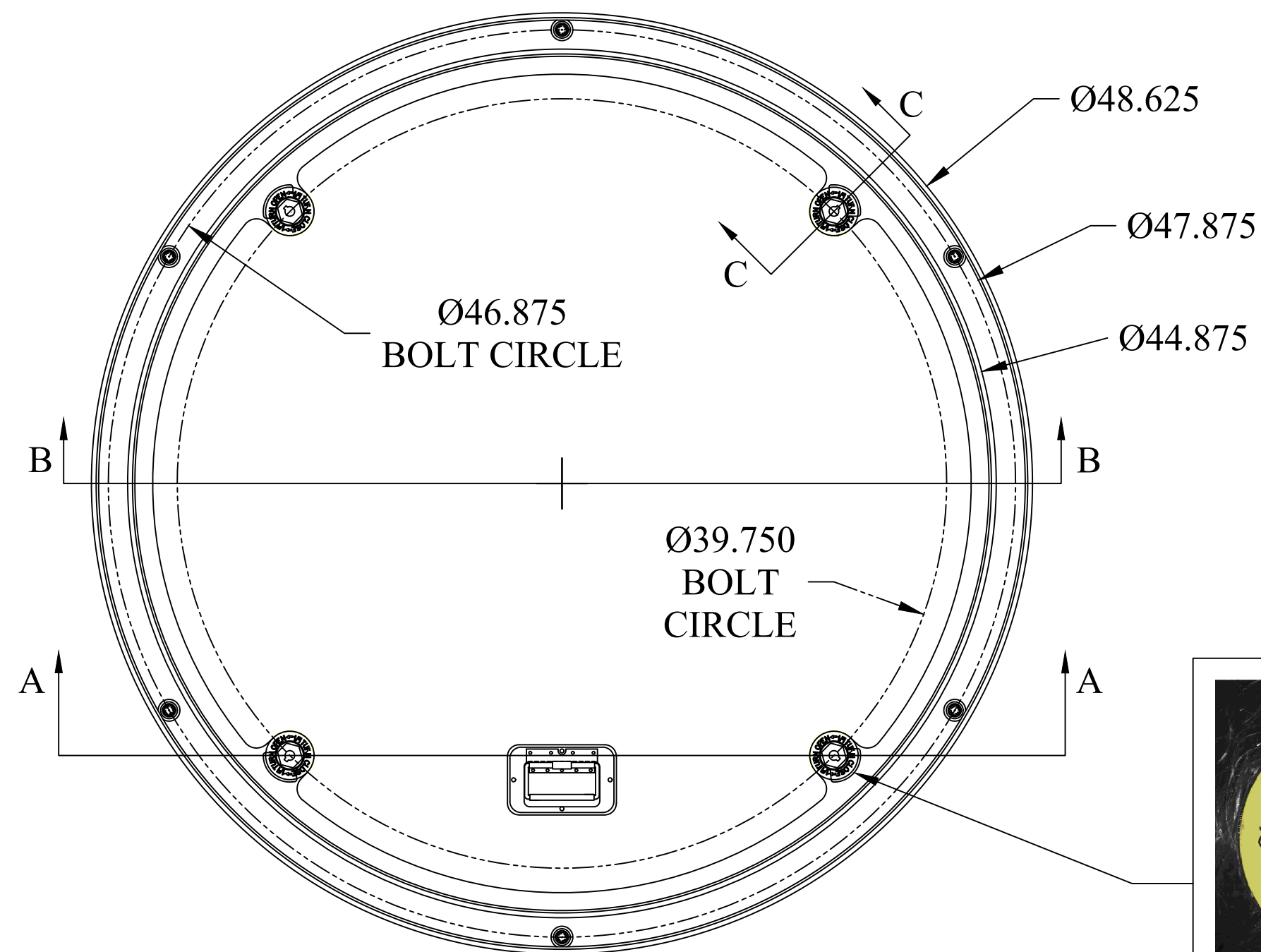


# COMPOSITE MANHOLE-WATER TIGHT-LOCKING

## FEATURES:

- ONE (1) 440 WTL COMPOSITE COVER RATED FOR H-20 TRUCK LOADS
- CARBON STEEL ANGLE AND FLAT BAR ALL WELDED CONSTRUCTION
- 14 GAUGE STEEL SKIRT
- STAINLESS STEEL RECESSED WATER-TIGHT LIFTING HANDLE FOR EASY REMOVAL
- FOUR (4) CAM LOCKS WITH I.D. TAG
- 1/8" BUNA-N GASKET (2PLCS)
- SIX (6) STAINLESS BOLTS AND WASHERS
- CHANNEL-STYLE CONCRETE ANCHORS
- ALL STEEL IS COATED WITH A RUST-PREVENTIVE PAINT.
- MADE IN USA



SECTION B-B  
(COVER NOT SHOWN)

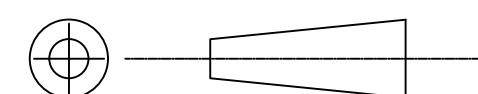
This document is proprietary and confidential. No part of this document may be disclosed in any manner to a third party without the prior written consent of Fairfield Industries

**DO NOT SCALE DRAWING**

UNLESS OTHERWISE SPECIFIED,  
DIMENSIONS ARE IN INCHES.

TOLERANCES ON ANGLES:  $\pm 1^\circ$   
FRACTIONAL:  $\pm 1/64$   
2-PLACE DECIMALS:  $\pm 0.05$   
3-PLACE DECIMALS:  $\pm 0.005$

THIRD ANGLE PROJECTION



**FAIRFIELD INDUSTRIES, INC**

4483 CHOPPEE ROAD, GEORGETOWN SC 29440

PHONE: 843-461-3894

FAX: 843-461-3907

DESCRIPTION

490-WTLC

SIZE

SCALE

DWG. NO

C.REV

REV

SIZE

C

NTS

S091817-1

-

1

DRAWN BY

S BESHORE

DATE 03/27/17

SHT

1 OF 1