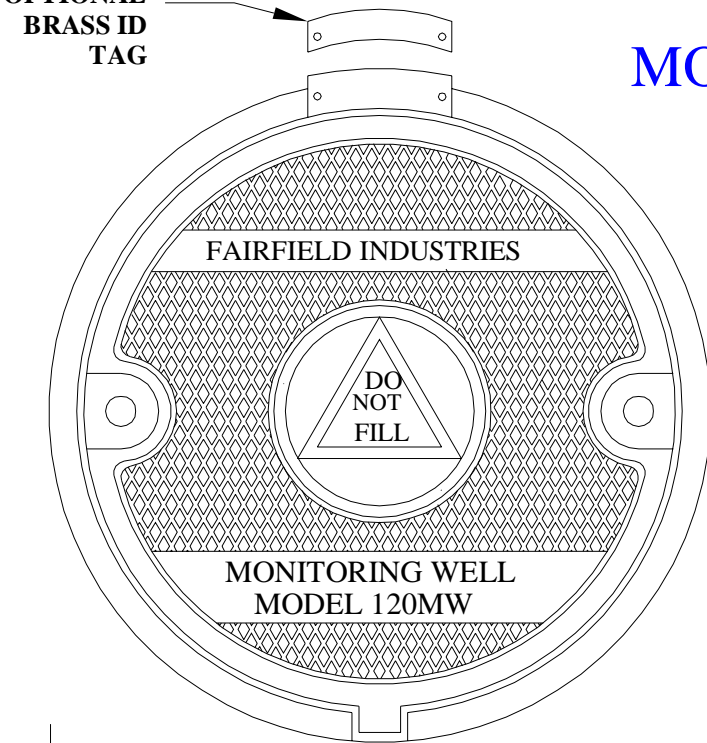


# MW SERIES

## MONITOR WELL MANHOLES 80MW / 120MW / 180MW

OPTIONAL  
BRASS ID  
TAG

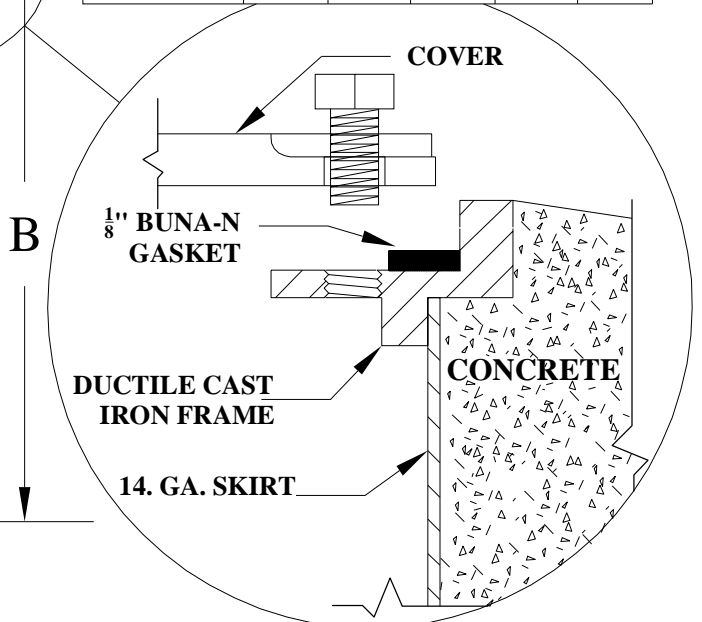
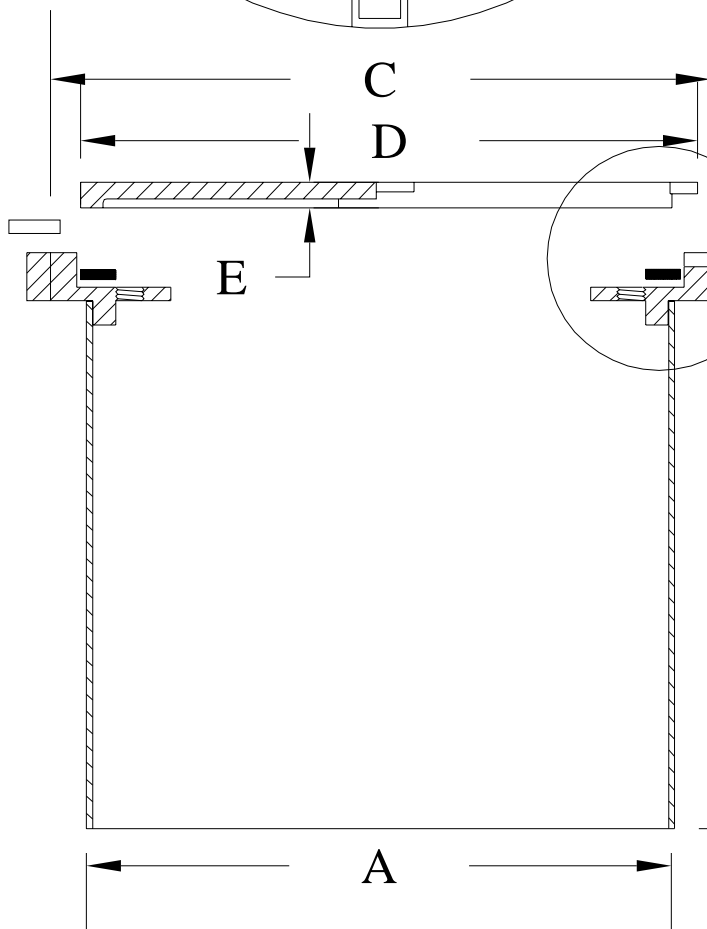


### STANDARD FEATURES

- SIZES: 8" , 12" , AND 18" DIAMETER SKIRT OPENINGS SELF ALIGNING COVER AND BOLT HOLES FOR EASE OF INSTALLATION AND REMOVAL
- DUCTILE CAST IRON FRAME AND COVER
- 14 GAUGE STEEL SKIRTS IN 8" , 12" , AND 18" DEPTHS
- API TRIANGULAR SYMBOL AND THE WORDS "MONITORING WELL" AND " DO NOT FILL" CAST INTO COVER
- STAINLESS STEEL HEX HEAD BOLTS SECURE COVER FOR LIMITED ACCESS AND UNAUTHORIZED PRODUCT DROPS
- BUNA-N GASKET FORMS WATERTIGHT SEAL PREVENTING RUN-OFF CONTAMINATION
- OPTIONAL BRASS TAG FOR STAMPING WITH PROPER IDENTIFICATION

**MONITOR WELL MANHOLES  
WATERTIGHT**

MODEL	A	B	C	D	E
80-MW-8	8 1/4"	8"	9 3/4"	8 1/2"	1/2"
80-MW-12	8 1/4"	12"	9 3/4"	8 1/2"	1/2"
120-MW-8	12 1/4"	8"	13 3/4"	12 1/2"	5/8"
120-MW-12	12 1/4"	12"	13 3/4"	12 1/2"	5/8"
180-MW-12	18 1/4"	12"	19 3/4"	18 1/2"	7/8"



**MODEL #: MW SERIES**

MW SERIES  
MONITOR WELL MANHOLES  
80MW/120MW/180MW

**FAIRFIELD INDUSTRIES, INC.**

4483 CHOPPEE ROAD, GEORGETOWN, SC 29440

PHONE: 843-461-3894 FAX: 843-461-3907

www.fairfield-industries.com

Copyright© Fairfield Industries, Inc. All rights reserved.