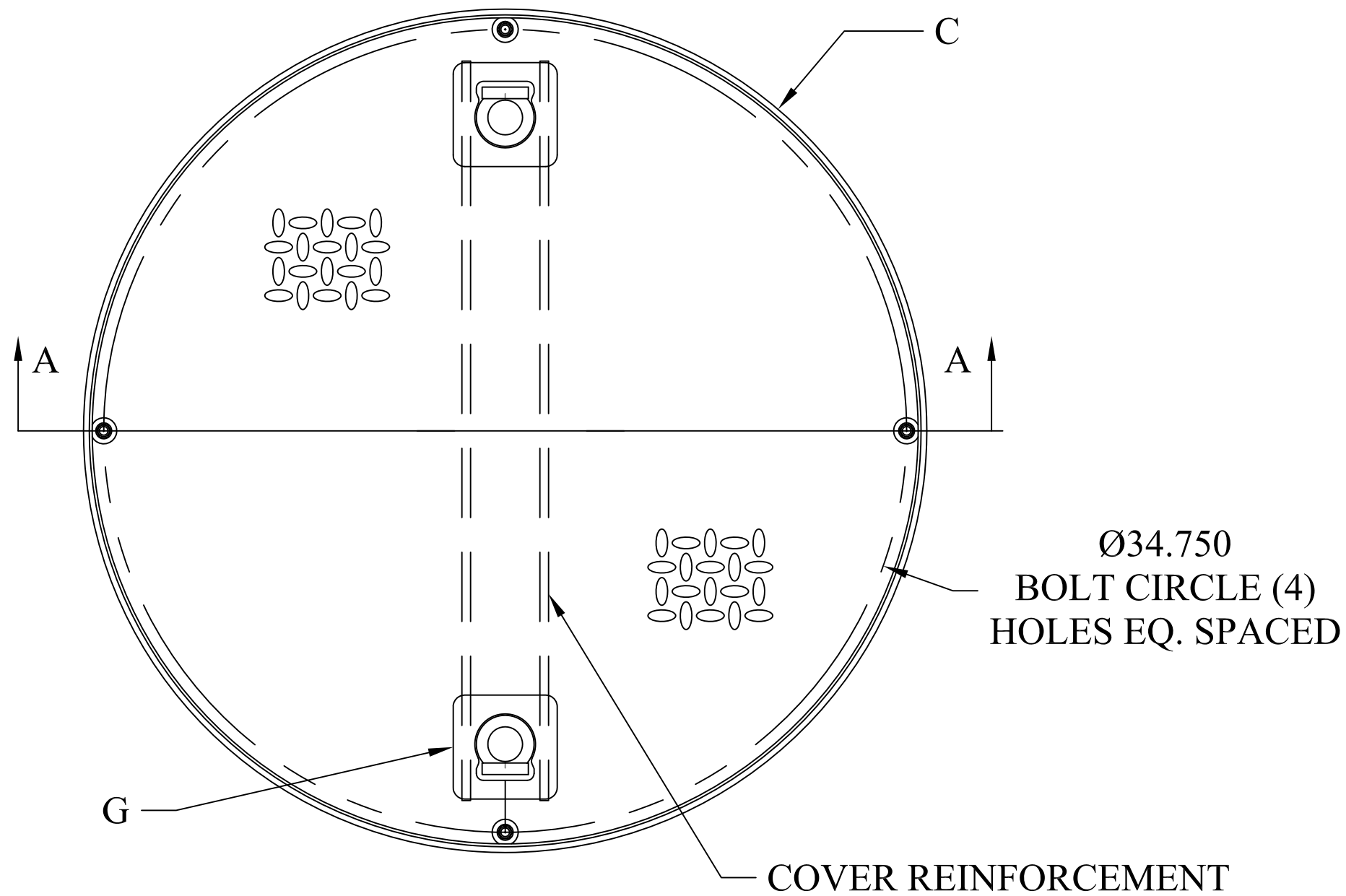


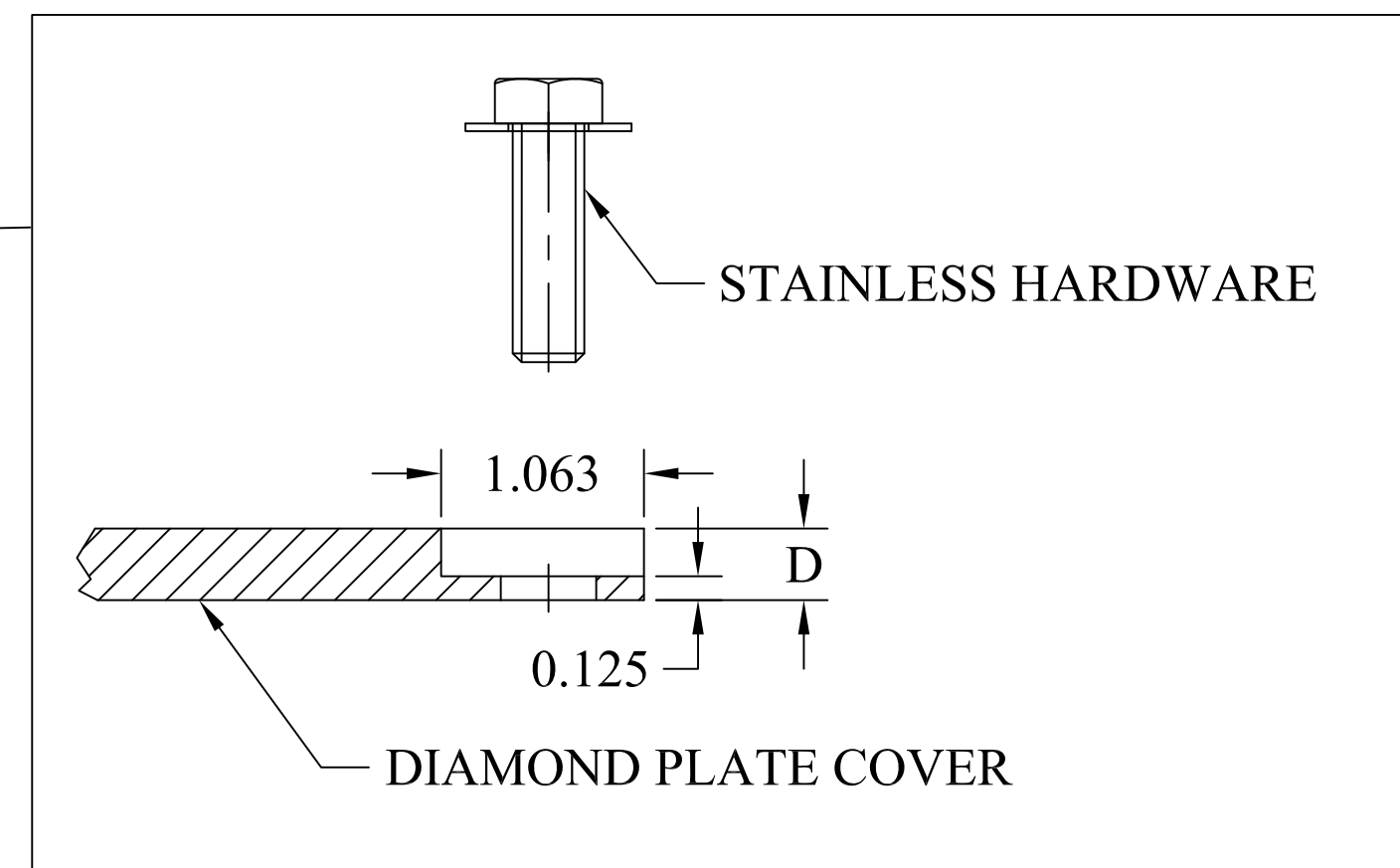
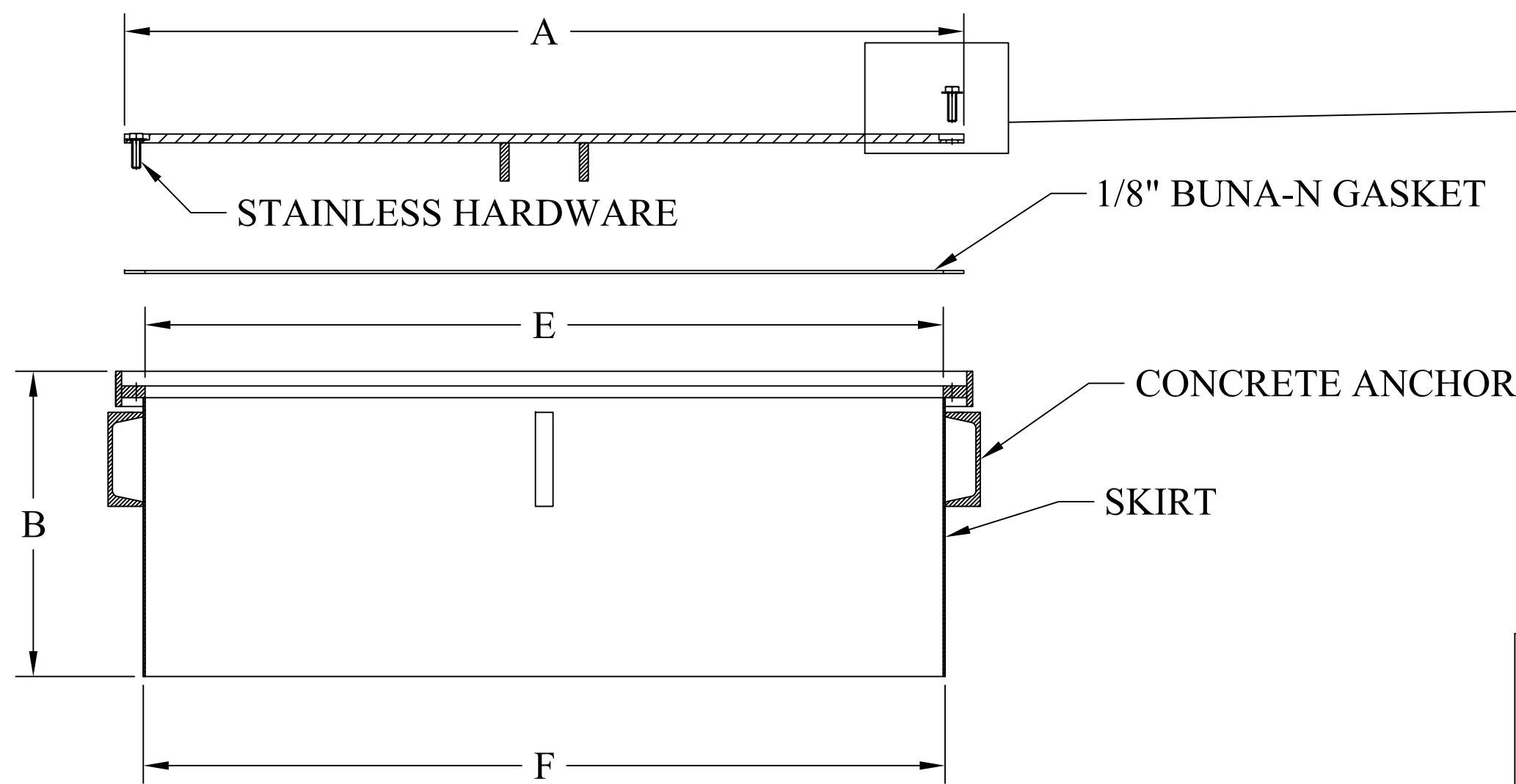
# LARGE WATER TIGHT ROUND MANHOLE

## FEATURES:

- STEEL T-FRAME CONSTRUCTION
- REINFORCED DIAMOND PLATE COVER WITH H-20 WHEEL LOADING
- 1/8" BUNA-N GASKET
- FOUR (4) STAINLESS STEEL HEX BOLTS
- WATER TIGHT LIFT HANDLES
- 14 GAUGE SKIRT
- ALL STEEL COATED WITH RUST PREVENTATIVE PAINT
- CHANNEL-STYLE CONCRETE ANCHORS
- MADE IN USA



LARGE WATER TIGHT ROUND MANHOLES								
MODEL	A	B	C	D	E	F	G	H
<b>240 WT</b>	23.75"	13"	24.50"	3/8"	24"	22.150"	1	4
<b>300 WT</b>	29.75"	13"	30.50"	3/8"	30"	28.150"	1	4
<b>360 WT</b>	35.75"	13"	36.50"	3/8"	36"	34.150"	2	4
<b>380 WT</b>	37.75"	13"	38.50"	3/8"	38"	36.150"	2	4
<b>420 WT</b>	41.75"	13"	42.50"	1/2"	42"	40.150"	2	4
<b>480 WT</b>	47.75"	13"	48.50"	1/2"	48"	46.150"	2	6



This document is proprietary and confidential. No part of this document may be disclosed in any manner to a third party without the prior written consent of Fairfield Industries

**DO NOT SCALE DRAWING**  
UNLESS OTHERWISE SPECIED  
DIMENSIONS ARE IN INCHES.  
TOLERANCES ON ANGLES: ± 1°  
FRACTIONAL: ± 1/16  
2-PLACE DECIMALS: ± 0.062  
3-PLACE DECIMAL: ± 0.032

THIRD ANGLE PROJECTION

**FAIRFIELD INDUSTRIES, INC**  
4483 CHOPPEE ROAD, GEORGETOWN SC 29440  
PHONE: 843-461-3894 FAX: 843-461-3907

DESCRIPTION  
**LARGE WATER TIGHT ROUND MANHOLE**

SIZE C	SCALE NTS	DWG.NO. D050218-1	REV. 1
DRAWN BY D NETTLES		DATE 05/02/18	SHT. 1 OF 1