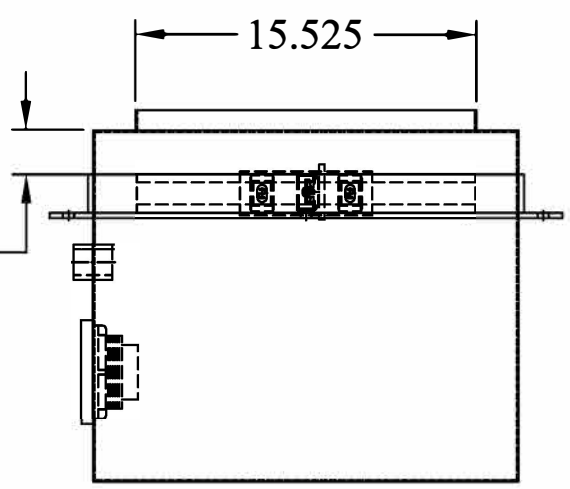
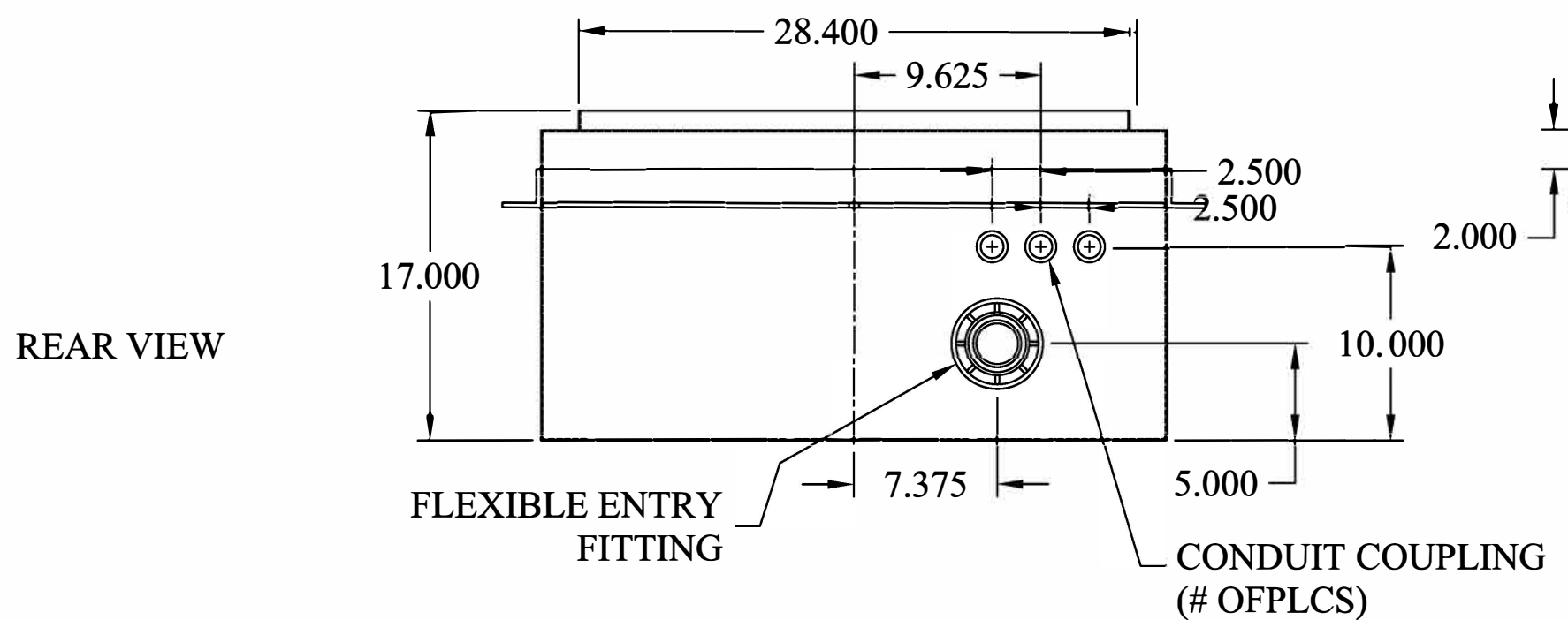
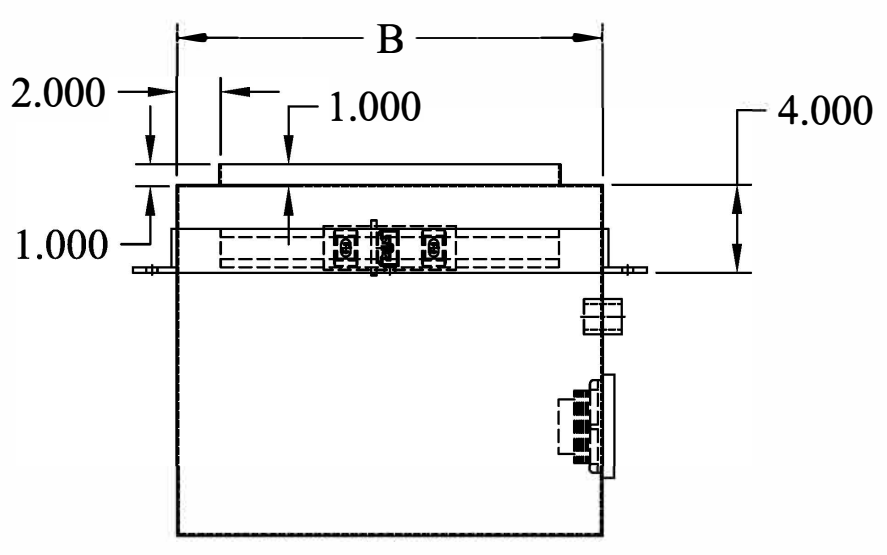
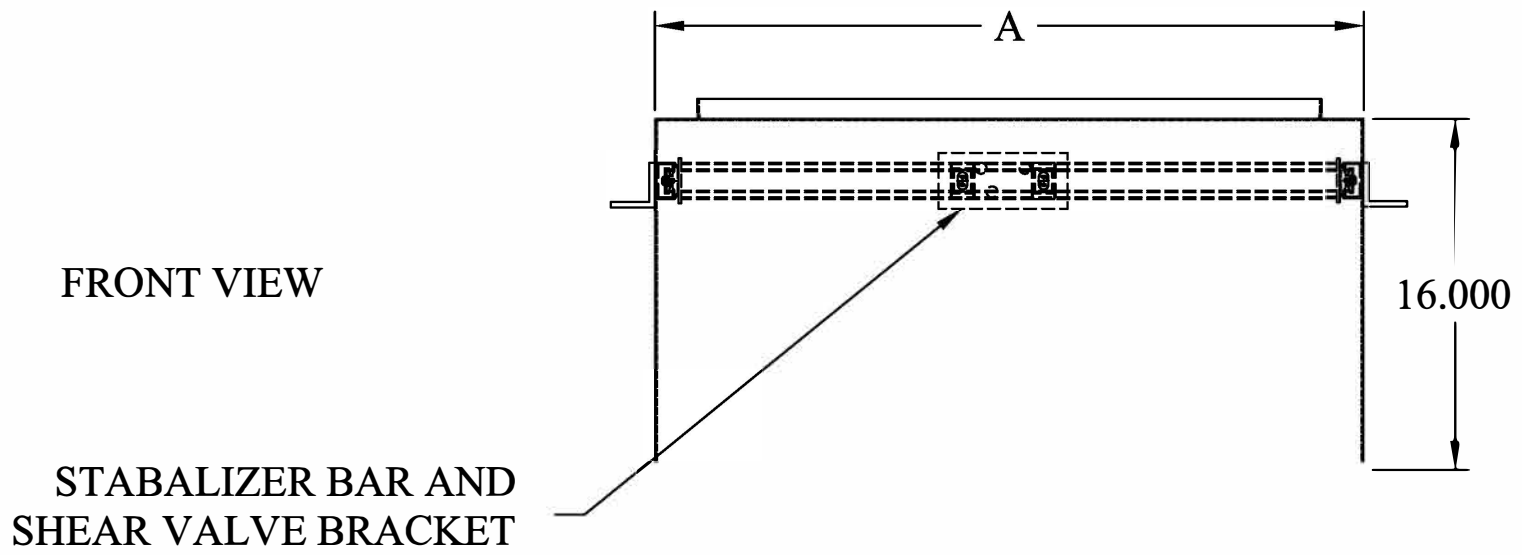


FEATURES:

- 14 GAUGE 316L STAINLESS STEEL ALL WELDED CONSTRUCTION
- FLEXIBLE ENTRY FITTING
- CONDUIT COUPLINGS
- STANDARD UNI STRUT STYLE SHEAR VALVE MOUNTING BRACKETS AND STABILIZER BAR
- 2.0" x 2.0" x 0.250" ANGLE MOUNTING FLANGE WITH 0.5" HOLES
- MADE TO ORDER
- PLEASE SUBMIT DISPENSER FOOTPRINT FOR ENTRY HOLE PLACEMENT
- MADE IN USA



This document is proprietary and confidential. No part of this document may be disclosed in any manner to a third party without the prior written consent of Fairfield Industries

DO NOT SCALE DRAWING
 UNLESS OTHERWISE SPECIFIED, DIMENSIONS ARE IN INCHES.
 TOLERANCES ON ANGLES: ± 1°
 FRACTIONAL: ± 1/64
 2-PLACE DECIMALS: ± 0.05
 3-PLACE DECIMALS: ± 0.005
 THIRD ANGLE PROJECTION

FAIRFIELD INDUSTRIES, INC
 4483 CHOPPEE ROAD, GEORGETOWN SC 29440
 PHONE: 843-461-3894 FAX: 843-461-3907

DESCRIPTION					
MDP-1-CC					
SIZE	SCALE	DWG. NO	C.REV	REV	
C	NTS	D080519-2	-	1	
DRAWN BY			DATE	SHT	
D NETTLES			08/05/19	1 OF 1	