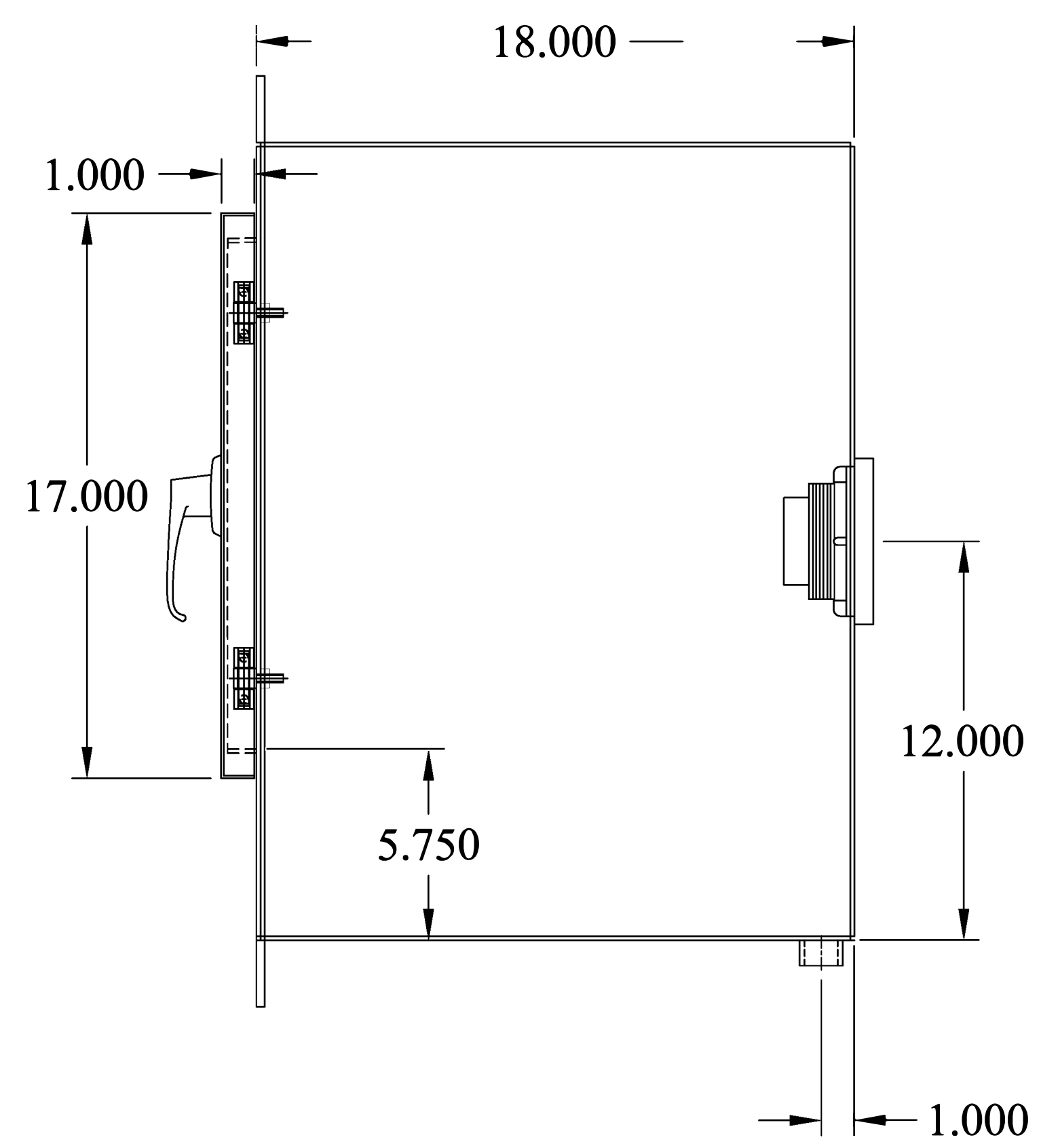
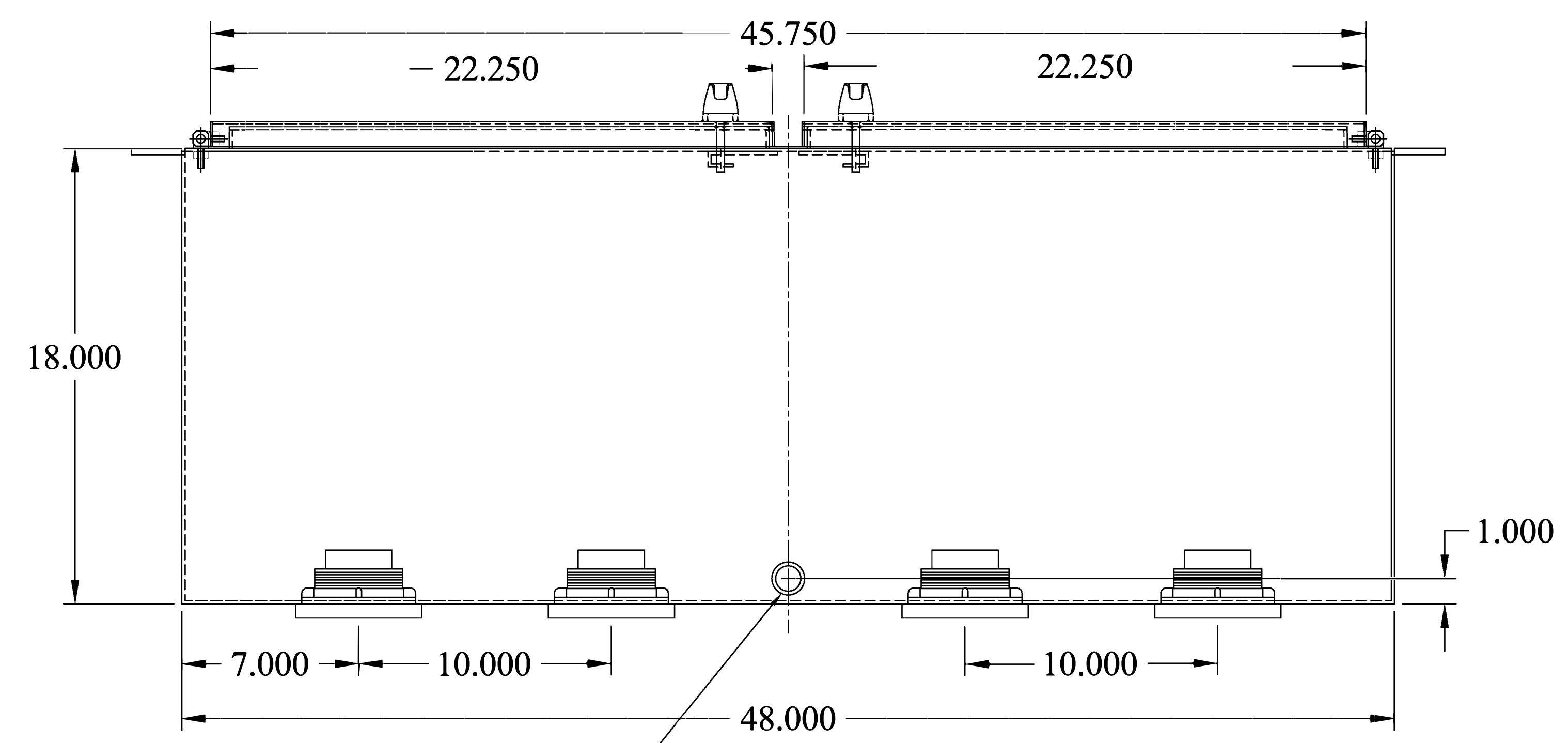


3/4" NPT DRAIN FITTING FRONT VIEW FLEXIBLE ENTRY FITTING (4PLCS)



RIGHT SIDE VIEW



3/4" NPT DRAIN FITTING BOTTOM VIEW

FEATURES:

- 11GA. 304 STAINLESS STEEL BODY, ALL WELDED CONSTRUCTION
- 14GA. 304 STAINLESS STEEL GASKET-SEALED ACCESS DOOR
- 28 GALLION LEAK CAPACITY
- TWO (2) STAINLESS STEEL LOCK HANDLE
- FOUR (4) FLEXIBLE ENTRY-FITTINGS (2, 3, 4")
- ONE (1) 3/4" NPT DRAIN CONNECTION
- 28" X 52" X 1/4" 304 STAINLESS STEEL FLUSH MOUNTING PLATE
- MADE IN USA

DO NOT SCALE DRAWING
UNLESS OTHERWISE SPECIED
DIMENSIONS ARE IN INCHES.
TOLERANCES ON ANGLES: ± 1°
FRACTIONAL: ± 1/16
2-PLACE DECIMALS: ± 0.062
3-PLACE DECIMAL: ± 0.032

FAIRFIELD INDUSTRIES, INC
4483 CHOPPEE ROAD, GEORGETOWN SC 29440
PHONE: 843-461-3894 FAX: 843-461-3907

DESCRIPTION
RFP-24-18F4 PORT

SIZE	SCALE	DWG. NO.	REV.
D	NTS	D021721-1	1
DRAWN BY		DATE	SHT.
D NETTLES		02/17/21	1 OF 1

This document is proprietary and confidential. No part of this document may be disclosed in any manner to a third party without the prior written consent of Fairfield Industries

