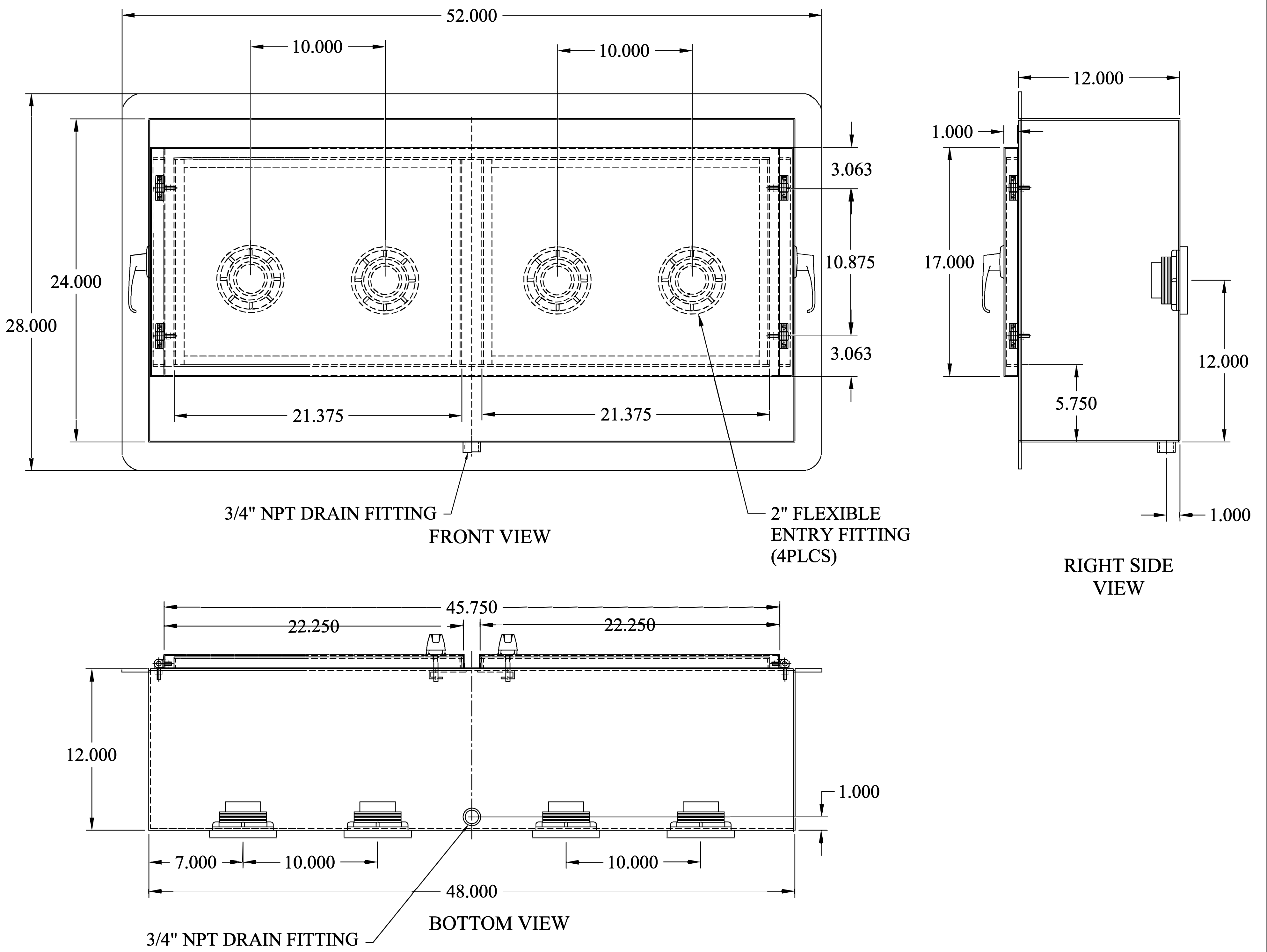


**FEATURES:**

- 11GA. 304 STAINLESS STEEL BODY, ALL WELDED CONSTRUCTION
- 14GA. 304 STAINLESS STEEL GASKET-SEALED ACCESS DOORS
- 28 GALLION LEAK CAPACITY
- TWO (2) STAINLESS STEEL LOCKING HANDLES
- FOUR (4) FLEXIBLE ENTRY FITTINGS (2, 3, 4")
- ONE (1) 3/4" NPT DRAIN CONNECTION
- 28" X 52" X 1/4" 304 STAINLESS STEEL FLUSH MOUNTING PLATE
- MADE IN USA



<p><b>DO NOT SCALE DRAWING</b>          UNLESS OTHERWISE SPECIED DIMENSIONS ARE IN INCHES.          TOLERANCES ON ANGLES: ± 1°          FRACTIONAL: ± 1/16          2-PLACE DECIMALS: ± 0.062</p>	<p><b>FAIRFIELD INDUSTRIES, INC</b>          4483 CHOPPEE ROAD, GEORGETOWN SC 29440          PHONE: 843-461-3894 FAX: 843-461-3907</p>			
	<p>DESCRIPTION  <b>RFP-24F-4 PORT</b></p>			
<p>This document is proprietary and confidential. No part of this document may be disclosed in any manner to a third party without the prior written consent of Fairfield Industries</p>	<p>SIZE  <b>D</b></p>	<p>SCALE  <b>NTS</b></p>	<p>DWG.NO.  <b>D110619-1</b></p>	<p>REV.  <b>1</b></p>
	<p>DRAWN BY  <b>D. NETTLES</b></p>		<p>DATE  <b>11/06/19</b></p>	<p>SHT.  <b>1 OF 1</b></p>

