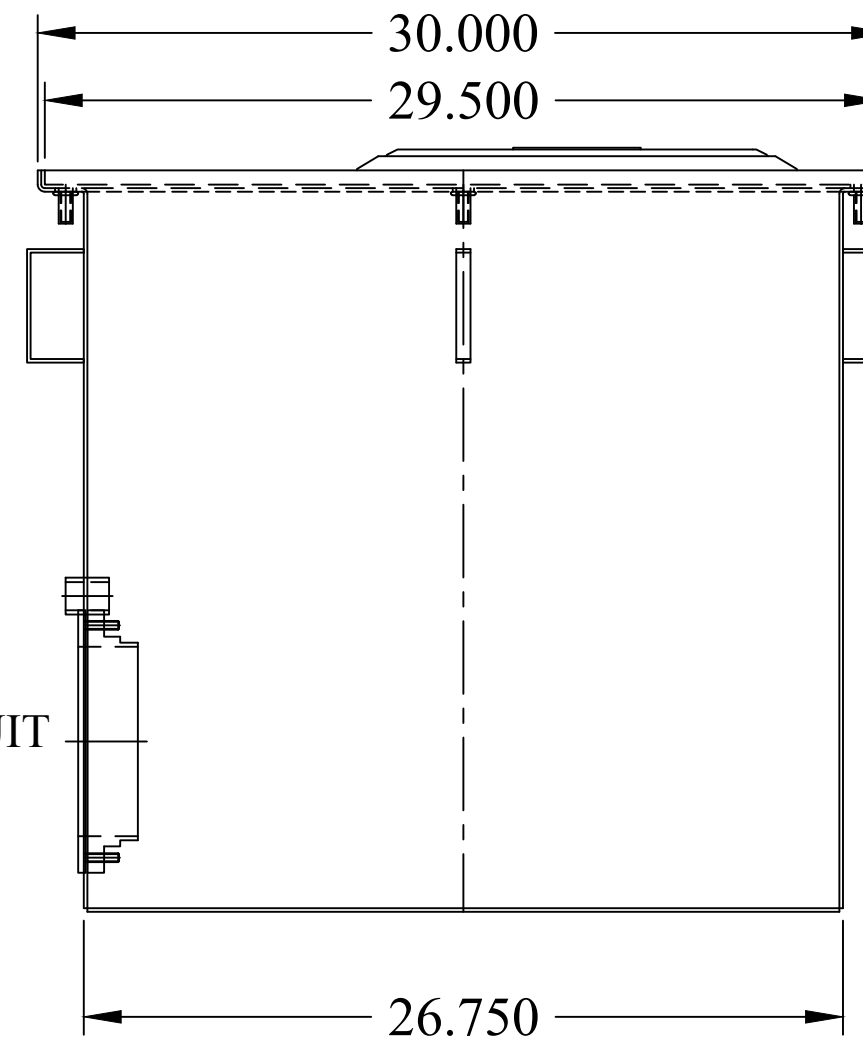
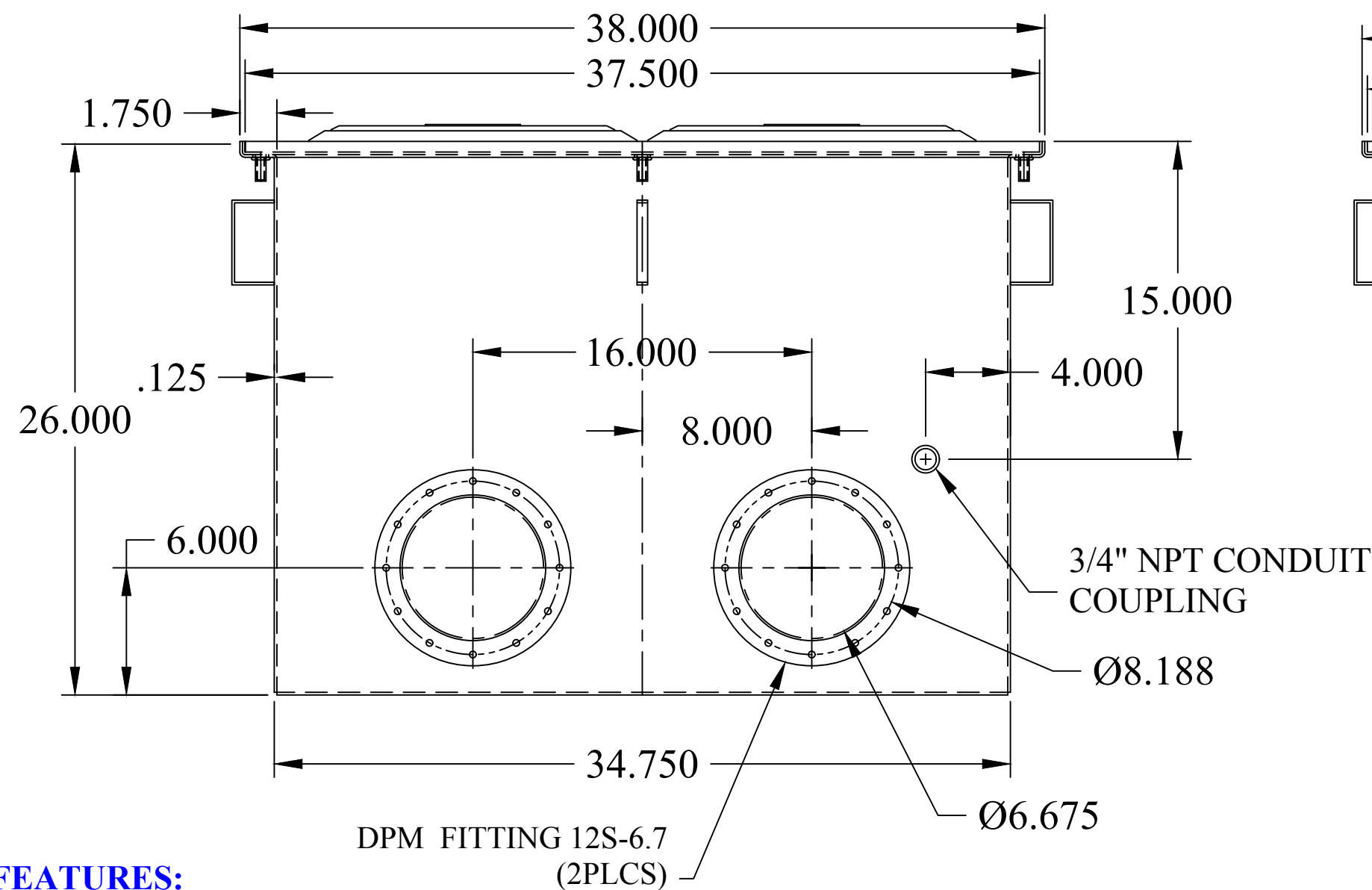


SECTION A-A

0.5" x 4.0"
REINFORCEMENT



FEATURES:

- ONE (1) REMOVABLE, 1/2" THICK REINFORCED, DIAMOND PLATE COVER
- 11 GAUGE CARBON STEEL SKIRT
- 1/8" THICK BUNA-N GASKET AND STAINLESS STEEL HARDWARE
- TWO (2) SCM-5, 5 GAL. STAINLESS MANHOLES WITH STANDARD PUMP
- TWO (2) DPM FITTINGS 12S-6.7 (FOR 6.0" PIPE)
- ONE (1) 3/4" NPT CONDUIT COUPLING
- CHANNEL-STYLE CONCRETE ANCHORS
- MADE IN USA

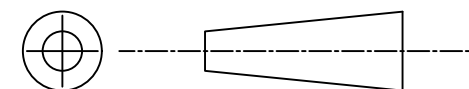
This document is proprietary and confidential. No part of this document may be disclosed in any manner to a third party without the prior written consent of Fairfield Industries

DO NOT SCALE DRAWING

UNLESS OTHERWISE SPECIFIED,
DIMENSIONS ARE IN INCHES.

TOLERANCES ON ANGLES: ± 1°
FRACTIONAL: ± 1/64
2-PLACE DECIMALS: ± 0.05
3-PLACE DECIMALS: ± 0.005

THIRD ANGLE PROJECTION



FAIRFIELD INDUSTRIES, INC

4483 CHOPPEE ROAD, GEORGETOWN SC 29440

PHONE: 843-461-3894 FAX: 843-461-3907

DESCRIPTION

RFTC-2

| | | | |
|------------------|---------------------|-----------------------------|-------------------|
| SIZE C | SCALE NTS | DWG. NO S011317-1 | C.REV 2 |
|------------------|---------------------|-----------------------------|-------------------|

| | | |
|------------------------------|-------------------------|----------------------|
| DRAWN BY S BESHORE | DATE 06/30/17 | SHT 1 OF 1 |
|------------------------------|-------------------------|----------------------|