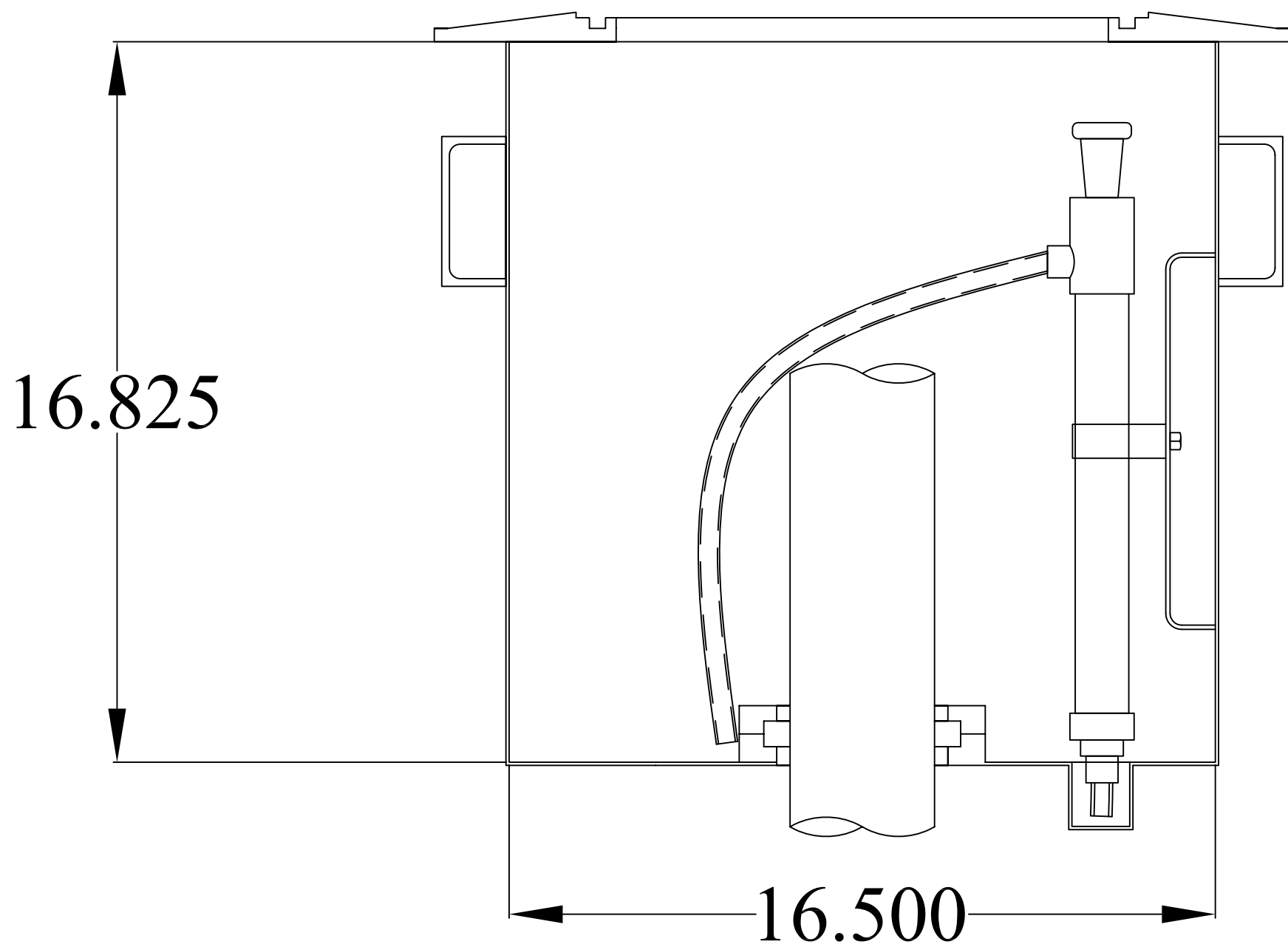
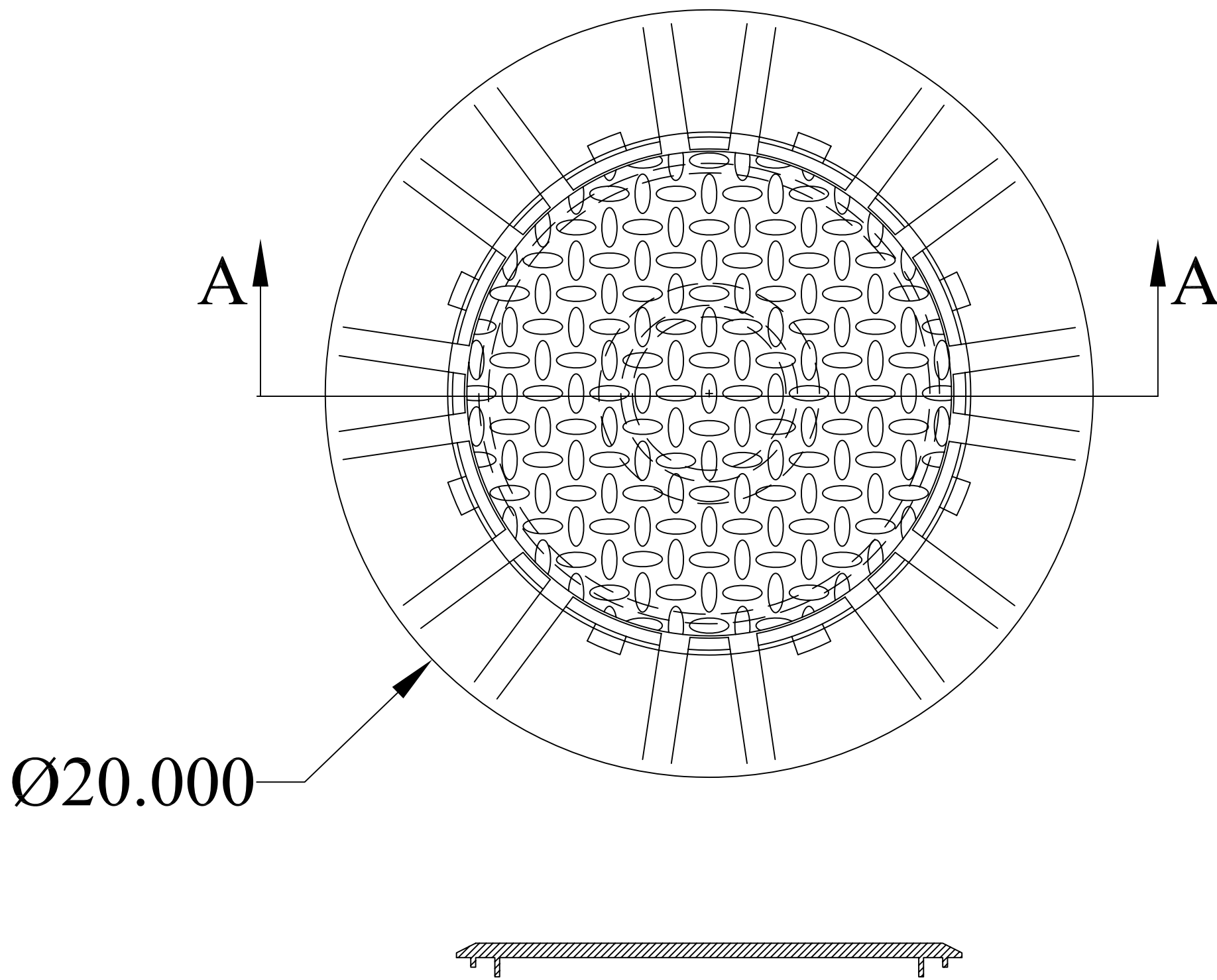


SCM-15

15 GALLON SPILL CONTAINMENT MANHOLE



STD FEATURES:

- SPECIALLY DESIGNED WATER-TIGHT FRAME AND COVER ASSEMBLY CAST OF DUCTILE IRON IS H-20 LOAD-RATED
- CONCRETE ANCHORS
- 14GA. STAINLESS STEEL 15 GALLON SPILL CONTAINER
- FLEXIBLE, DOUBLE-SEALING VICTAULIC BUNA-N SEAL
- HAND-OPERATED SINGLE-STROKE PUMP AND HOSE ASSEMBLY
- STAINLESS STEEL SUMP
- STANDARD PIPE SIZE: 4"
- MADE IN USA

ADDITIONAL FEATURES:

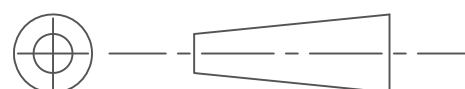
- SLIDES OVER FILL PIPES FOR QUICK AND EASY INSTALLATIONS
- NO DEEP EXCAVATIONS
- NO CUTTING OR THREADING OF FILL PIPES
- DOES NOT INTERFERE WITH TANK INTEGRITY TESTING
- RETROFITS EXISTING TANKS ECONOMICALLY
- NON-CORROSIVE CONSTRUCTION
- LONG-TERM, LITTLE MAINTENANCE
- CAN BE INSTALLED ON REMOTE FILLS

SPILL CONTAINMENT MANHOLES OPTIONS		
MODEL #	FLANGE SIZE	SEAL SIZE
SCM-15-2	2"	2"
SCM-15-3	3"	3"
SCM-15-4	4"	4"

DO NOT SCALE DRAWING

UNLESS OTHERWISE SPECIED
DIMENSIONS ARE IN INCHES.
TOLERANCES ON ANGLES: ± 1°
FRACTIONAL: ± 1/16
2-PLACE DECIMALS: ± 0.062
3-PLACE DECIMAL: ± 0.032

THIRD ANGLE PROJECTION



FAIRFIELD INDUSTRIES, INC

4483 CHOPPEE ROAD, GEORGETOWN SC 29440
PHONE: 843-461-3894 FAX: 843-461-3907

DESCRIPTION

SCM-15

SIZE	SCALE	DWG.NO.	REV.
C	NTS	D080919-2	1
DRAWN BY		DATE	SHT.
D NETTLES		08/09/19	1 OF 1

This document is proprietary and confidential. No part of this document may be disclosed in any manner to a third party without the prior written consent of Fairfield Industries