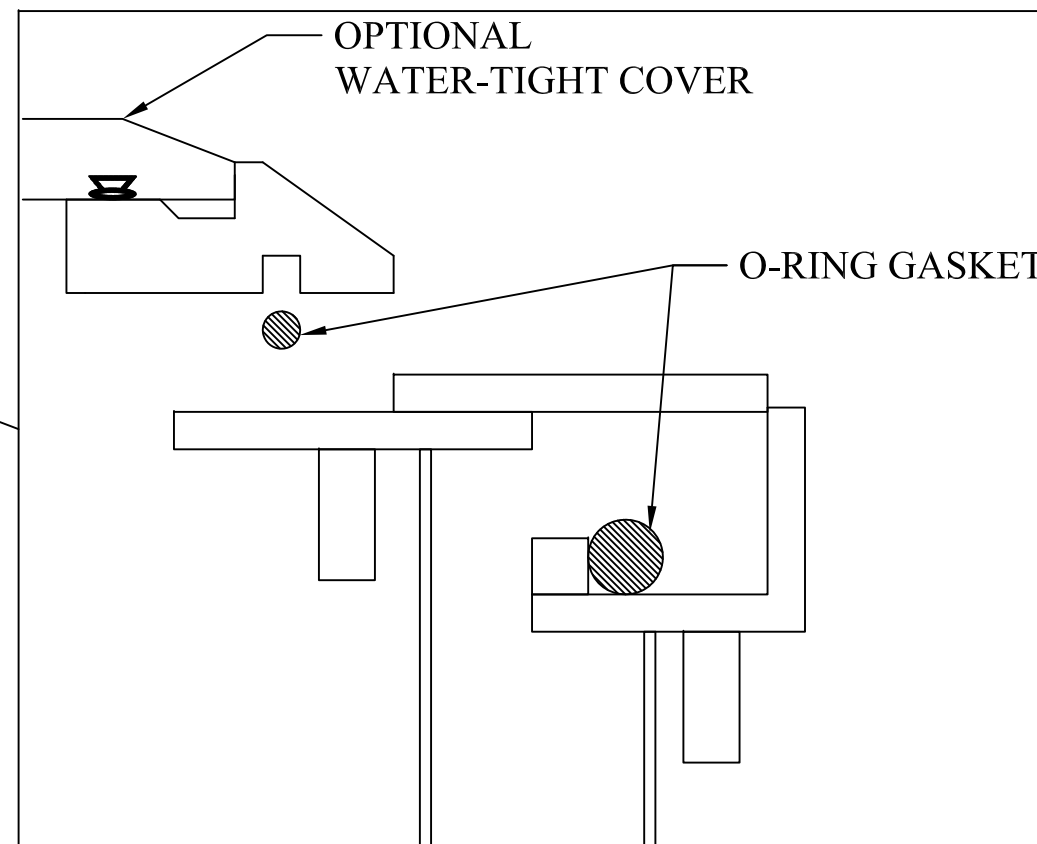
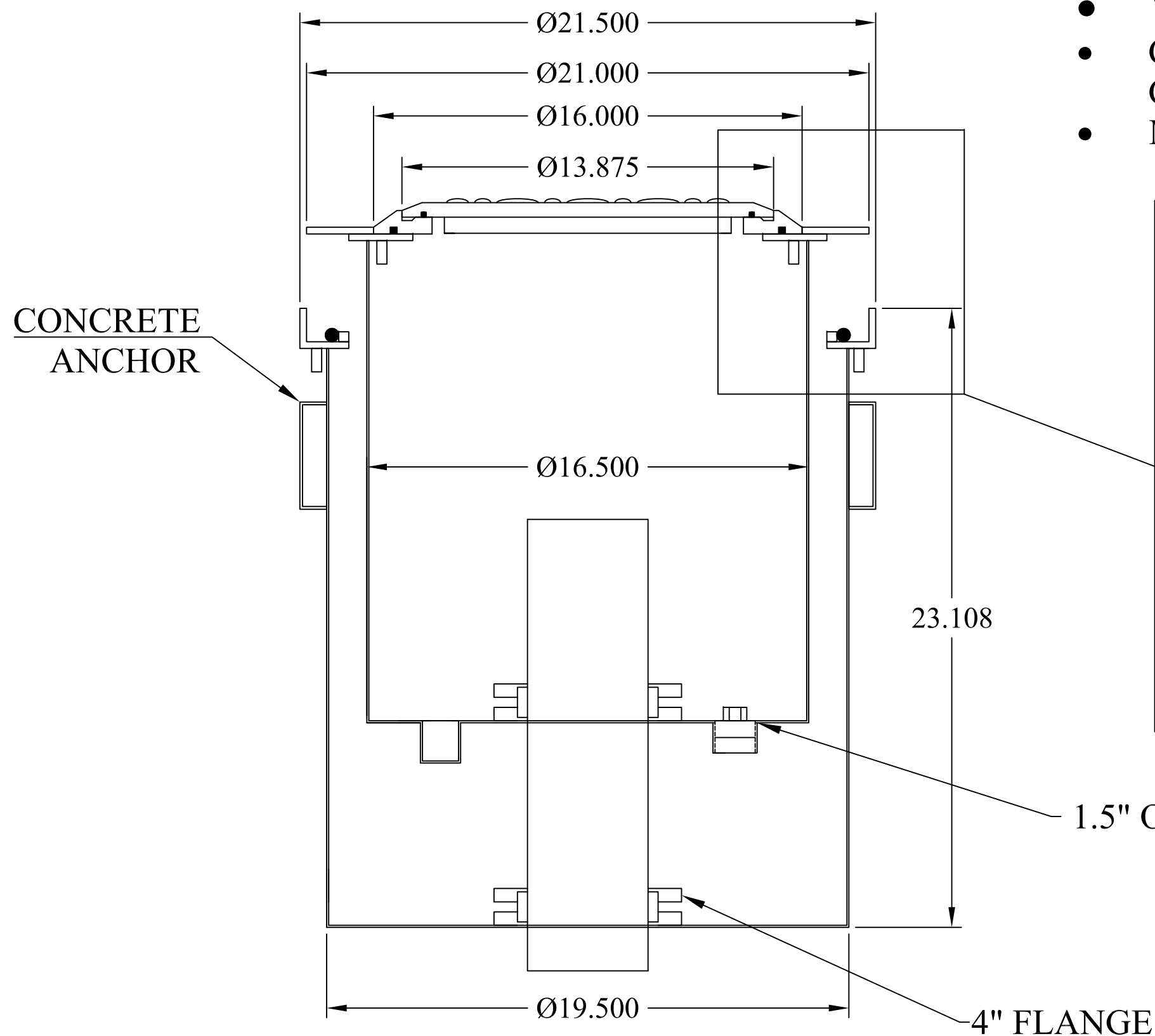


**FEATURES:**

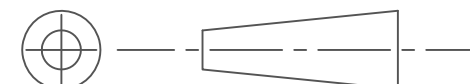
- PRIMARY 15-GALLON SPILL CONTAINER IS REMOVABLE AND REPLACEABLE WITH ONLY 8 STAINLESS STEEL CAP SCREWS. THE PRIMARY CONTAINER IS SEALED TO THE SECONDARY CONTAINER WITH A SINGLE, REPLACEABLE O-RING. NO CONCRETE BREAKING REQUIRED.
- THE REMOVABLE PRIMARY 14GA. STAINLESS STEEL SLIP-ON SPILL CONTAINER IS SECONDARILY CONTAINED IN A 14GA. STAINLESS STEEL CONTAINMENT CHAMBER. BOTH CHAMBERS ARE FACTORY TESTED AND VACUUM OR PRESSURE TESTING IS POSSIBLE IN THE FIELD USING THE INTEGRAL TEST PORT.
- SPECIALLY DESIGNED AND PROVEN RAIN-TIGHT FRAME AND COVER ASSEMBLY IS CAST OF DUCTILE IRON AND DETERS SURFACE WATER WITHOUT SEALS. OPTIONAL WATER-TIGHT ("WT") BUNA-N SEALED COVER IS AVAILABLE BY REQUEST.
- 1.5" OBSERVATION PORT
- VICTUAL DOUBLE-SEALING GASKET AND FLANGE ASSEMBLY
- CHANNEL-STYLE CONCRETE ANCHORS ON SECONDARY CONTAINMENT CHAMBERS PROVIDE SUPERIOR ADHESION TO CONCRETE SLAB.
- MADE IN USA



This document is proprietary and confidential. No part of this document may be disclosed in any manner to a third party without the prior written consent of Fairfield Industries

**DO NOT SCALE DRAWING**  
 UNLESS OTHERWISE SPECIED  
 DIMENSIONS ARE IN INCHES.  
 TOLERANCES ON ANGLES: ± 1°  
 FRACTIONAL: ± 1/16  
 2-PLACE DECIMALS: ± 0.062  
 3-PLACE DECIMAL: ± 0.032

THIRD ANGLE PROJECTION



**FAIRFIELD INDUSTRIES, INC**  
 4483 CHOPPEE ROAD, GEORGETOWN SC 29440  
 PHONE: 843-461-3894 FAX: 843-461-3907

DESCRIPTION				SCM-15D	
SIZE	SCALE	DWG.NO.	REV.		
C	NTS	D062920-4	1		
DRAWN BY		DATE	SHT.		
D NETTLES		06/29/20	1 OF 1		