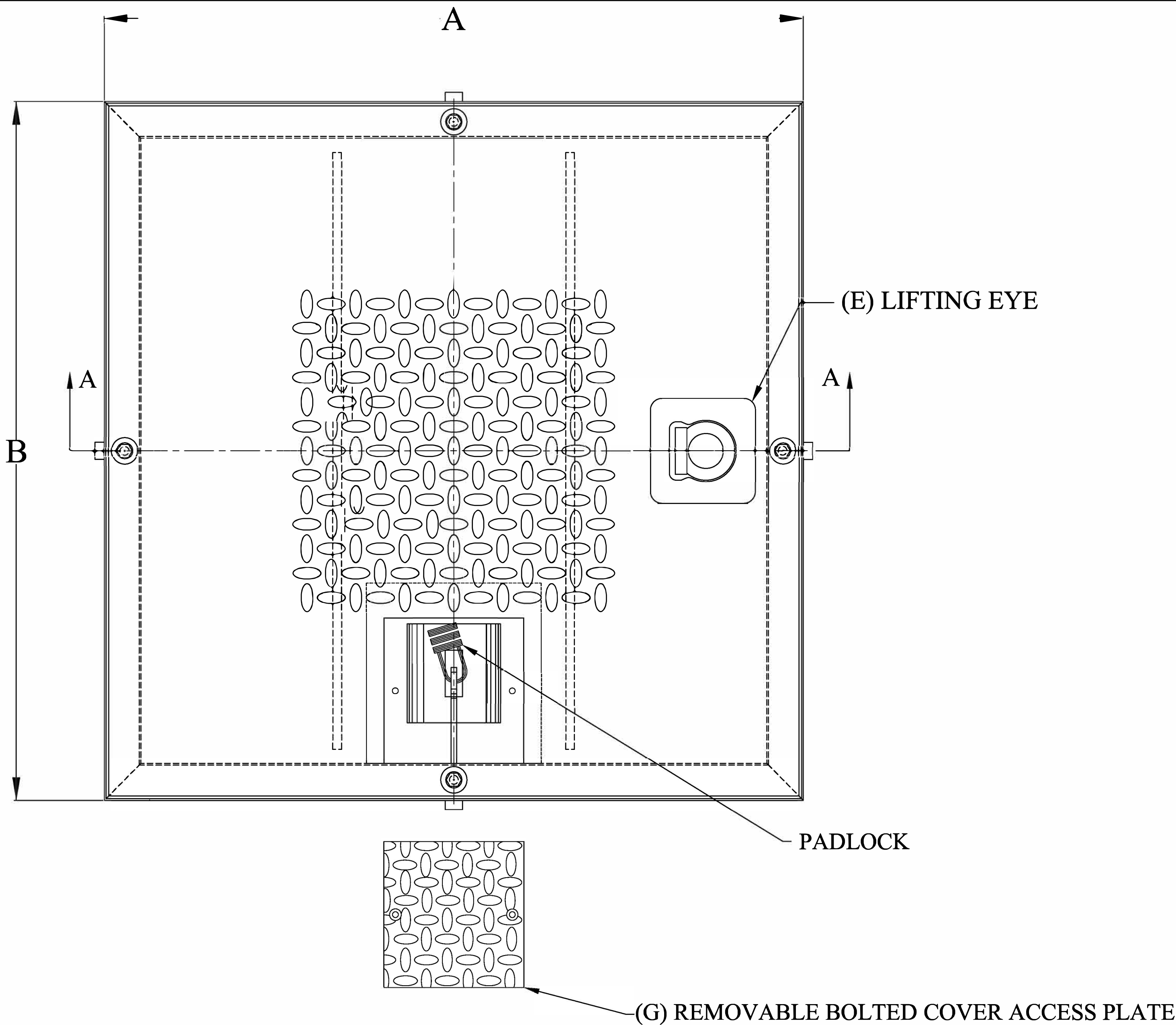
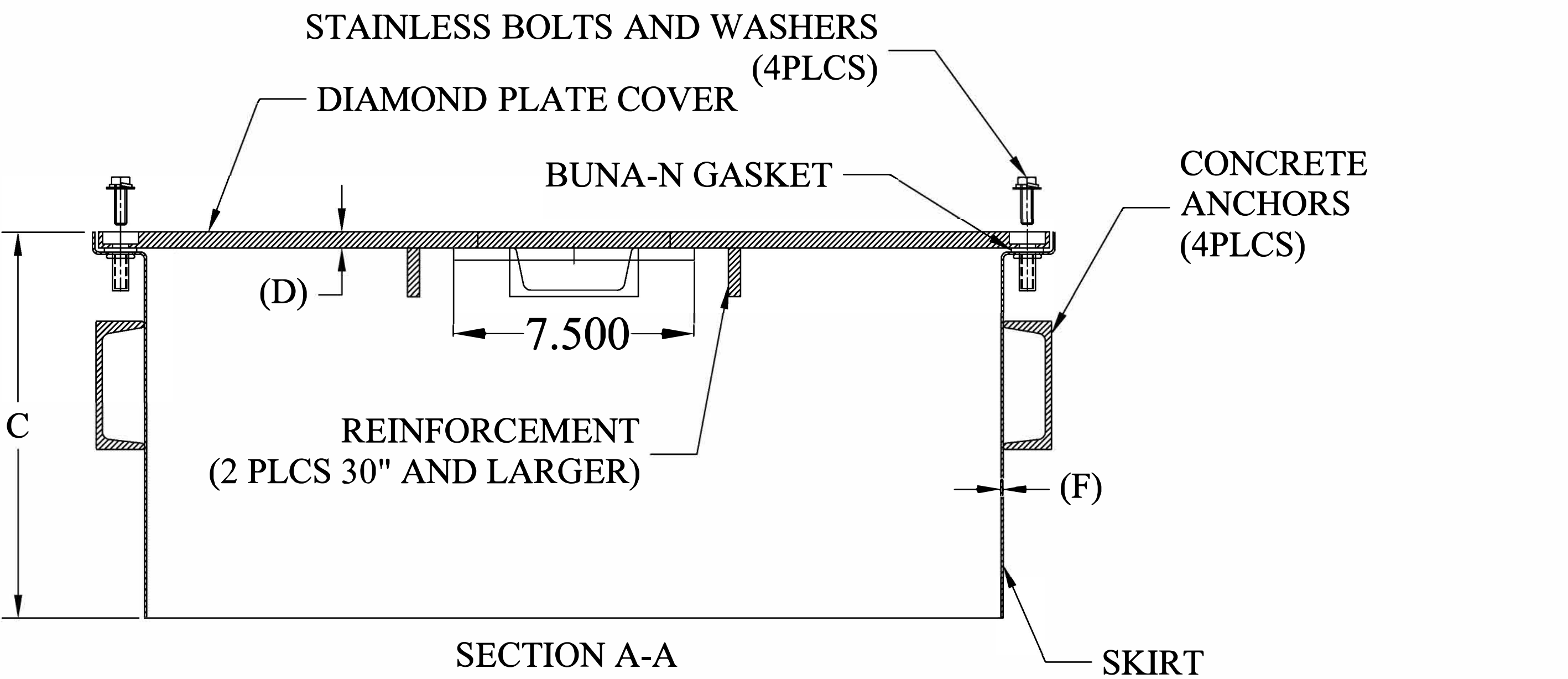


SQUARE LOCKING MANHOLES-WATERTIGHT



FEATURES:

- 3/8" DIAMOND PLATE COVERS, H-20 TRUCK LOAD RATING, 30" AND LARGER MODELS ARE REINFORCED
- 1/2" DIAMOND PLATE COVER FOR MANHOLES 42" AND LARGER
- BUNA-N GASKET
- WATERTIGHT LIFTING EYES (E)
- STAINLESS STEEL BOLTS AND WASHERS
- REMOVABLE BOLTED COVER ACCESS PLATE (G)
- 14 GAUGE STEEL FORMED FRAME ON SIZES 18",24" AND 30"
- 11 GAUGE STEEL FORMED FRAME ON 36 AND LARGER SIZES
- CHANNEL STYLE CONCRETE ANCHORS ON 30" AND LARGER SIZES.
- ALL STEEL IS COATED WITH PROTECTED PAINT
- MADE IN USA



SQUARE WATER TIGHT LOCKING MANHOLES							
MODEL	A	B	C	D	E	G	F
18SL-WT	18"	18"	10"	3/8"	1	1	14GA.
24SL-WT	24"	24"	10"	3/8"	1	1	14GA.
30SL-WT	30"	30"	10"	3/8"	1	1	14GA.
36SL-WT	36"	36"	12"	3/8"	2	2	11GA.
42SL-WT	42"	42"	12"	1/2"	2	2	11GA.
48SL-WT	48"	48"	12"	1/2"	2	2	11GA.

DO NOT SCALE DRAWING
 UNLESS OTHERWISE SPECIED
 DIMENSIONS ARE IN INCHES.
 TOLERANCES ON ANGLES: ± 1°
 FRACTIONAL: ± 1/16
 2-PLACE DECIMALS: ± 0.062
 3-PLACE DECIMAL: ± 0.032

FAIRFIELD INDUSTRIES,INC
 4483 CHOPPEE ROAD, GEORGETOWN SC 29440
 PHONE: 843-461-3894 FAX: 843-461-3907

DESCRIPTION
 SQUARE LOCKING MANHOLES-WATERTIGHT

SIZE	SCALE	DWG.NO.	REV.
D	NTS	D040918-2	1
DRAWN BY		DATE	SHT
D. NETTLES		04/09/18	1 OF 1

This document is proprietary and confidential. No part of this document may be disclosed in any manner to a third party without the prior written consent of Fairfield Industries

THIRD ANGLE PROJECTION